

## Basic Information

<b>Product Name</b>	Anti-Cytochrome c/CYCS Antibody	
<b>Gene Name</b>	CYCS	
<b>Source</b>	Rabbit	
<b>Clonality</b>	Polyclonal	
<b>Isotype</b>	IgG	
<b>Species Reactivity</b>	human, mouse, rat	
<b>Tested Application</b>	WB, IHC	
<b>Contents</b>	500 ug/ml antibody with PBS, 0.02% NaN <sub>3</sub> , 1 mg/ml BSA and 50% glycerol.	
<b>Immunogen</b>	E. coli-derived mouse Cytochrome C recombinant protein (Position: G2-E105). Mouse Cytochrome C shares 91.3% and 100% amino acid (aa) sequence identity with human and rat Cytochrome C, respectively.	
<b>Concentration</b>	500 ug/ml	
<b>Purification</b>	Immunogen affinity purified.	
<b>Observed MW</b>	14 kDa	
<b>Dilution Ratios</b>	Western blot (WB): 1:500-2000 Immunohistochemistry (IHC): 1:50-400 (Boiling the paraffin sections in 10mM citrate buffer, pH6.0, or PH8.0 EDTA repair liquid for 20 mins is required for the staining of formalin/paraffin sections.) Optimal working dilutions must be determined by end user.	

## Storage

12 months from date of receipt, -20°C as supplied. 6 months 2 to 8°C after reconstitution. Avoid repeated freezing and thawing.

## Background Information

CYCS is also known as CYC, HCS or THC4. This gene encodes a small heme protein that functions as a central component of the electron transport chain in mitochondria. The encoded protein associates with the inner membrane of the mitochondrion where it accepts electrons from cytochrome b and transfers them to the cytochrome oxidase complex. This protein is also involved in initiation of apoptosis. Mutations in this gene are associated with autosomal dominant nonsyndromic thrombocytopenia. Numerous processed pseudogenes of this gene are found throughout the human genome.

## Reference

Anti-Cytochrome c/CYCS Antibody 被引用在16文献中。

## Selected Validation Data

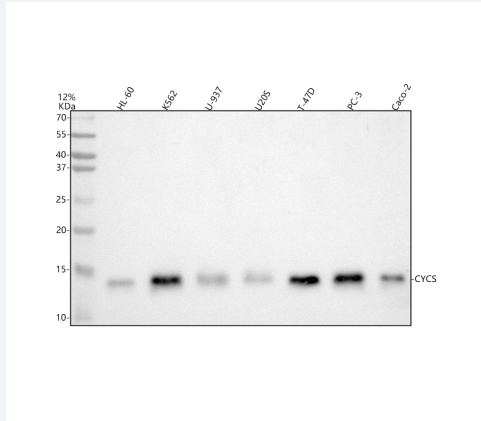


Figure 1. Western blot analysis of Cytochrome c/CYCS using anti-Cytochrome c/CYCS antibody (A03529). The sample well of each lane was loaded with 30 ug of sample under reducing conditions.

Lane 1: human HL-60 whole cell lysates,  
Lane 2: human K562 whole cell lysates,  
Lane 3: human U-937 whole cell lysates,  
Lane 4: human U2OS whole cell lysates,  
Lane 5: human T-47D whole cell lysates,  
Lane 6: human PC-3 whole cell lysates,  
Lane 7: human Caco-2 whole cell lysates.

After electrophoresis, proteins were transferred to a membrane. Then the membrane was incubated with rabbit anti-Cytochrome c/CYCS antigen affinity purified polyclonal antibody (A03529) at a dilution of 1:1000 and probed with a goat anti-rabbit IgG-HRP secondary antibody (Catalog # BA1054). The signal is developed using ECL Plus Western Blotting Substrate (Catalog # AR1197). A specific band was detected for Cytochrome c/CYCS at approximately 14 kDa. The expected band size for Cytochrome c/CYCS is at 12 kDa.

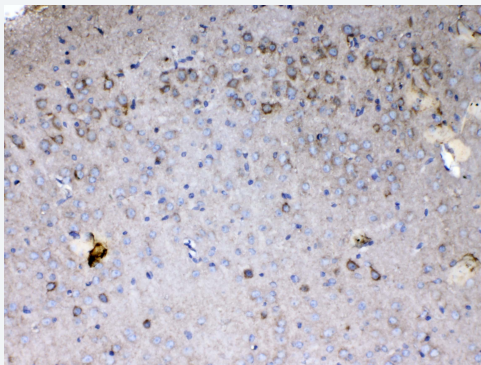


Figure 3. IHC analysis of Cytochrome c/CYCS using anti-Cytochrome c/CYCS antibody (A03529).

Cytochrome c/CYCS was detected in a paraffin-embedded section of mouse brain tissue. Biotinylated goat anti-rabbit IgG was used as secondary antibody. The tissue section was incubated with rabbit anti-Cytochrome c/CYCS Antibody (A03529) at a dilution of 1:200 and developed using Streptavidin-Biotin-Complex (SABC) (Catalog # SA1022) with DAB (Catalog # AR1022) as the chromogen.