

Basic Information

Product Name	Anti-Plasminogen/PLG Antibody
Gene Name	PLG
Source	Rabbit
Clonality	Polyclonal
Isotype	IgG
Species Reactivity	human, mouse, rat
Tested Application	WB, FCM
Contents	500 ug/ml antibody with PBS, 0.02% NaN ₃ , 1 mg/ml BSA and 50% glycerol.
Immunogen	A synthetic peptide corresponding to a sequence at the N-terminus of human Plasminogen, which shares 72.7% amino acid (aa) sequence identity with both mouse and rat Plasminogen.
Concentration	500 ug/ml
Purification	Immunogen affinity purified.
Observed MW	90 kDa
Dilution Ratios	Western blot (WB): 1:500-2000 Flow Cytometry (Fixed):1:50-200

Storage

12 months from date of receipt, -20°C as supplied.

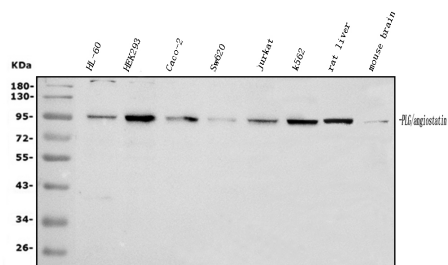
Background Information

Plasminogen (PLG) is a circulating zymogen that is converted to the active enzyme plasmin by cleavage of the peptide bond between arg560 and val561, which is mediated by urokinase (PLAU) and tissue plasminogen activator (PLAT). The main function of plasmin is to dissolve fibrin (see, e.g., FGA) clots. Plasmin, like trypsin, belongs to the family of serine proteinases. Defects in this gene are likely a cause of thrombophilia and ligneous conjunctivitis.

Reference

Anti-Plasminogen/PLG Antibody被引用在5文献中。

Selected Validation Data



Western blot analysis of Plasminogen/PLG using anti-Plasminogen/PLG antibody (A03674-1). The sample well of each lane was loaded with 30 ug of sample under reducing conditions.

Lane 1: human placenta tissue lysates,

Lane 2: human HL-60 whole cell lysates,

Lane 3: human 22RV1 whole cell lysates,

Lane 4: human 293T tissue lysates,

Lane 5: human PANC-1 whole cell lysates,

Lane 6: human SGC-7901 whole cell lysates,

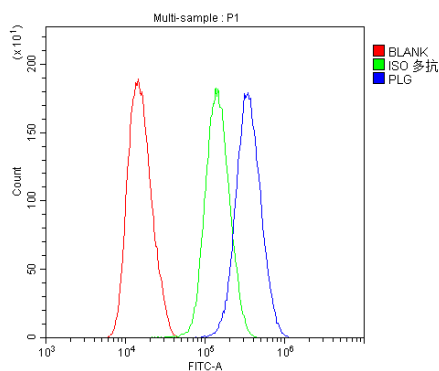
Lane 7: human Caco-2 whole cell lysates,

Lane 8: human PC-3 whole cell lysates,

Lane 9: rat brain tissue lysates,

Lane 10: mouse brain tissue lysates.

After electrophoresis, proteins were transferred to a membrane. Then the membrane was incubated with rabbit anti-Plasminogen/PLG antigen affinity purified polyclonal antibody (A03674-1) at a dilution of 1:1000 and probed with a goat anti-rabbit IgG-HRP secondary antibody (Catalog # BA1054). The signal is developed using ECL Plus Western Blotting Substrate (Catalog # AR1197). A specific band was detected for Plasminogen/PLG at approximately 90 kDa. The expected band size for Plasminogen/PLG is at 91 kDa.



Flow Cytometry analysis of U251 cells using anti-Plasminogen/PLG antibody (A03674-1).

Overlay histogram showing U251 cells stained with A03674-1 (Blue line).

To facilitate intracellular staining, cells were fixed with 4%

paraformaldehyde and permeabilized with permeabilization buffer. The

cells were blocked with 10% normal goat serum. And then incubated with

rabbit anti-Plasminogen/PLG Antibody (A03674-1) at 1:100 dilution for 30

min at 20°C. DyLight®488 conjugated goat anti-rabbit IgG (BA1127) was

used as secondary antibody at 1:100 dilution for 30 minutes at 20°C.

Isotype control antibody (Green line) was rabbit IgG at 1:100 dilution used

under the same conditions. Unlabelled sample without incubation with

primary antibody and secondary antibody (Red line) was used as a blank

control.