

Basic Information

Product Name	Anti-F4/80/ADGRE1 Antibody	
Gene Name	Adgre1	
Source	Rabbit	
Clonality	Polyclonal	
Isotype	IgG	
Species Reactivity	mouse, rat	
Tested Application	IHC, IF	
Contents	500 ug/ml antibody with PBS, 0.02% NaN ₃ , 1 mg/ml BSA and 50% glycerol.	
Immunogen	E. coli-derived mouse F4/80/Adgre1 recombinant protein (Position: G27-S230). Mouse Adgre1 shares 62.9% and 87.3% amino acid (aa) sequence identity with human and rat Adgre1, respectively.	
Concentration	500 ug/ml	
Purification	Immunogen affinity purified.	
Dilution Ratios	Immunohistochemistry (IHC):	1:50-400
	Immunofluorescence (IF):	1:50-400
	(Boiling the paraffin sections in 10mM citrate buffer,pH6.0,or PH8.0 EDTA repair liquid for 20 mins is required for the staining of formalin/paraffin sections.) Optimal working dilutions must be determined by end user.	

Storage

12 months from date of receipt, -20°C as supplied. 6 months 2 to 8°C after reconstitution. Avoid repeated freezing and thawing.

Background Information

Predicted to enable G protein-coupled receptor activity. Predicted to be involved in adenylate cyclase-activating G protein-coupled receptor signaling pathway. Predicted to act upstream of or within G protein-coupled receptor signaling pathway and adaptive immune response. Located in external side of plasma membrane. Is expressed in several structures, including cardiovascular system; central nervous system; genitourinary system; hemolymphoid system; and intestine. Orthologous to human ADGRE1 (adhesion G protein-coupled receptor E1).

Reference

Anti-F4/80/ADGRE1 Antibody被引用在7文献中。

Selected Validation Data

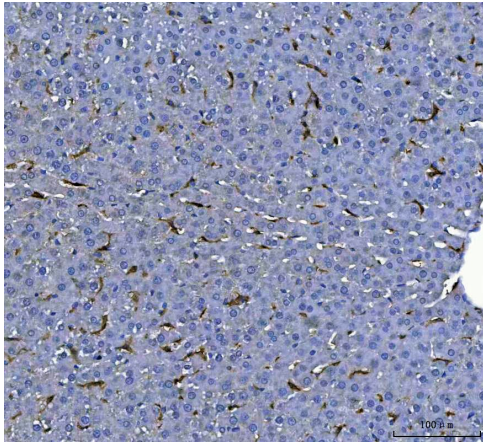


Figure 1. IHC analysis of F4/80/Adgre1 using anti-F4/80/Adgre1 antibody (A08751).

F4/80/Adgre1 was detected in a paraffin-embedded section of rat liver tissue. The tissue section was developed using HRP Conjugated Rabbit IgG Super Vision Assay Kit (Catalog # SV0002) with DAB (Catalog # AR1027) as the chromogen.

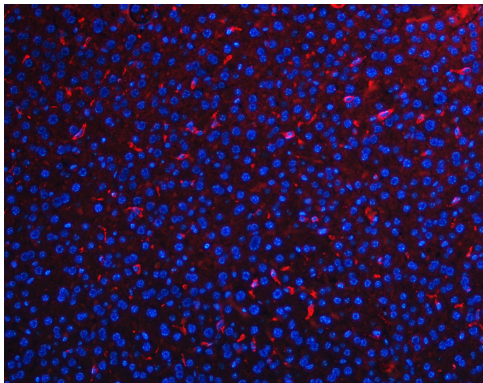


Figure 4. IF analysis of F4/80/Adgre1 using anti-F4/80/Adgre1 antibody (A08751).

F4/80/Adgre1 was detected in a paraffin-embedded section of mouse liver tissue. Cy3-conjugated Anti-rabbit IgG Secondary Antibody (red)(Catalog#BA1032) was used as secondary antibody. The section was counterstained with DAPI (Catalog # AR1176) (Blue).