

## Basic Information

<b>Product Name</b>	Anti-5-HT-1F/HTR1F Antibody
<b>Gene Name</b>	HTR1F
<b>Source</b>	Rabbit
<b>Clonality</b>	Polyclonal
<b>Isotype</b>	IgG
<b>Species Reactivity</b>	human, mouse, rat, monkey
<b>Tested Application</b>	WB
<b>Contents</b>	Liquid in PBS containing 50% glycerol, 0.5% BSA and 0.02% sodium azide.
<b>Immunogen</b>	Synthesized peptide derived from the Internal region of human SR-1F. at AA range: 70-150
<b>Purification</b>	Immunogen affinity purified
<b>Dilution Ratios</b>	WB, 1:500-1:2000

## Storage

Store at -20°C for one year. For short term storage and frequent use, store at 4°C for up to one month. Avoid repeated freeze-thaw cycles.

## Selected Validation Data

Product datasheet

## Anti-5-HT-1F/HTR1F Antibody

Catalog Number: **A10463-1**

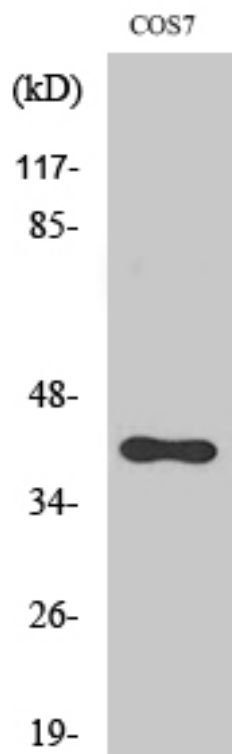
# BOSTER

antibody and ELISA experts

**BOSTER BIOLOGICAL TECHNOLOGY**

Building C21, 3rd and 4th floors, Optics Valley Biomedical Accelerator,  
Wuhan East Lake High-tech Development Zone

**Web:** [www.boster.com](http://www.boster.com) **Phone:** 027-67845390 **Email:** [boster@boster.com](mailto:boster@boster.com)



Western Blot (WB) analysis of specific cells using SR-1F Polyclonal antibody.