

Basic Information

Product Name	Anti-Zebrafish ACVR1L Antibody
Gene Name	ACVR1L
Source	Rabbit
Clonality	Polyclonal
Isotype	IgG
Species Reactivity	zebrafish
Tested Application	IHC
Contents	500 ug/ml antibody with PBS, 0.02% NaN3, 1 mg/ml BSA and 50% glycerol.
Immunogen	E.coli-derived Zebrafish ACVR1L recombinant protein (Position: M1-C506).
Concentration	500 ug/ml
Purification	Immunogen affinity purified.
Dilution Ratios	Immunohistochemistry (IHC): 1:50-400 (Boiling the paraffin sections in 10mM citrate buffer,pH6.0,or PH8.0 EDTA repair liquid for 20 mins is required for the staining of formalin/paraffin sections.) Optimal working dilutions must be determined by end user.

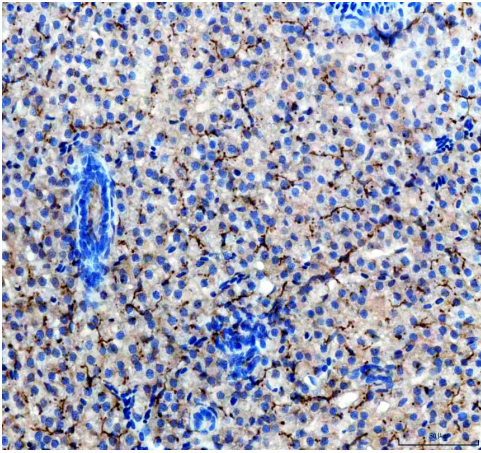
Storage

12 months from date of receipt, -20°C as supplied.

Background Information

Predicted to enable ATP binding activity; SMAD binding activity; and transforming growth factor beta receptor activity, type I. Acts upstream of or within several processes, including circulatory system development; determination of bilateral symmetry; and embryonic morphogenesis. Located in cell cortex and plasma membrane. Part of BMP receptor complex. Is expressed in brain; ceratobranchial 5 tooth; immature eye; liver; and tooth placode. Human ortholog(s) of this gene implicated in exfoliation syndrome; fibrodysplasia ossificans progressiva; primary angle-closure glaucoma; and primary open angle glaucoma. Orthologous to human ACVR1 (activin A receptor type 1).

Selected Validation Data



IHC analysis of ACVR1L using anti-ACVR1L antibody (AZO73736). ACVR1L was detected in a paraffin-embedded section of zebrafish liver tissue. The tissue section was incubated with rabbit anti-ACVR1L Antibody (AZO73736) at a dilution of 1:200 and developed using HRP Conjugated Rabbit IgG Super Vision Assay Kit (Catalog # SV0002) with DAB (Catalog # AR1027) as the chromogen.