

Basic Information

Product Name	Anti-CDK1 Antibody
Gene Name	CDK1
Source	Rabbit
Clonality	Polyclonal
Isotype	IgG
Species Reactivity	human
Tested Application	WB
Contents	500 ug/ml antibody with PBS, 0.02% NaN ₃ , 1 mg/ml BSA and 50% glycerol.
Immunogen	A synthetic peptide corresponding to a sequence at the C-terminus of human CDK1, different from the relative rat and mouse sequences by two amino acids.
Concentration	500 ug/ml
Purification	Immunogen affinity purified.
Observed MW	34 kDa
Dilution Ratios	Western blot (WB):1:500-2000

Storage

12 months from date of receipt, -20°C as supplied. 6 months 2 to 8°C after reconstitution. Avoid repeated freezing and thawing.

Background Information

CDC2, Cell Division Cycle 2, is also known as CDK1(Cyclin-dependent Kinase 1). CDC2 is a catalytic subunit of a protein kinase complex, called the M-phase promoting factor, that induces entry into mitosis and is universal among eukaryotes. In HeLa cells CDC2 is the most abundant phosphotyrosine-containing protein and its phosphotyrosine content is subject to cell cycle regulation. CDC2 gene is located on chromosome 10.

Reference

Anti-CDK1 Antibody 被引用在10文献中。

Selected Validation Data

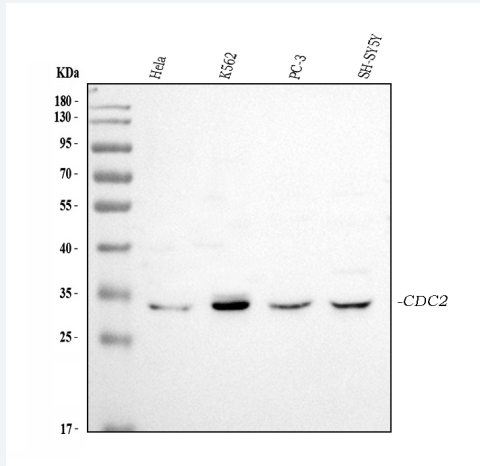


Figure 1. Western blot analysis of CDK1 using anti-CDK1 antibody (BA0027-2). The sample well of each lane was loaded with 30 ug of sample under reducing conditions.

Lane 1: HeLa whole cell lysates,

Lane 2: K562 whole cell lysates,

Lane 3: PC-3 whole cell lysates,

Lane 4: SH-SY5Y whole cell lysates.

After electrophoresis, proteins were transferred to a membrane. Then the membrane was incubated with rabbit anti-CDK1 antigen affinity purified polyclonal antibody (BA0027-2) at a dilution of 1:1000 and probed with a goat anti-rabbit IgG-HRP secondary antibody (Catalog # BA1054). The signal is developed using ECL Plus Western Blotting Substrate (Catalog # AR1197). A specific band was detected for CDK1 at approximately 34 kDa. The expected band size for CDK1 is at 34 kDa.