

Basic Information

Product Name	Anti-CCR5 Antibody
Gene Name	CCR5
Source	Rabbit
Clonality	Polyclonal
Isotype	IgG
Species Reactivity	human
Tested Application	WB, FCM
Contents	500 ug/ml antibody with PBS, 0.02% NaN ₃ , 1 mg/ml BSA and 50% glycerol.
Immunogen	A synthetic peptide corresponding to a sequence in the middle region of human CCR5.
Concentration	500 ug/ml
Purification	Immunogen affinity purified.
Observed MW	40 kDa
Dilution Ratios	Western blot (WB): 1:500-2000 Flow Cytometry (Fixed):1:50-200

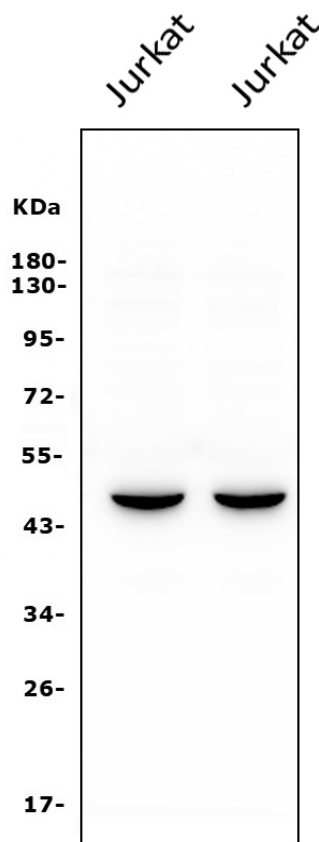
Storage

12 months from date of receipt, -20°C as supplied.

Background Information

Human CC chemokine receptor 5(CCR5), which is 17.5 kb from the CMKBR2 gene, encodes a 352-amino acid protein with a calculated molecular mass of 40,600 Da. It is organized into four exons and two introns. Human CCR5 is a co-receptor for macrophage-tropic strains of human immunodeficiency virus(HIV)-1 and is expressed by bone-marrow-derived cells. CCR5 is expressed on neurons, astrocytes, and microglia in the central nervous system, and on epithelium, endothelium, vascular smooth muscle and fibroblasts in other tissues. Functionally, CCR5 mediates the activation of cells by the chemokines macrophage inflammatory protein-1alpha, macrophage inflammatory protein-1beta, and RANTES, and serves as a fusion cofactor for macrophage-tropic strains of human immunodeficiency virus type 1.

Selected Validation Data

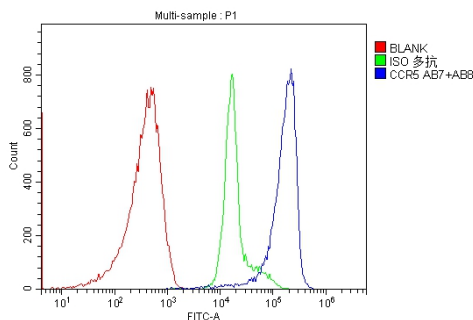


Western blot analysis of CCR5 using anti-CCR5 antibody (BA0376-2). The sample well of each lane was loaded with 30 ug of sample under reducing conditions.

Lane 1: Jurkat whole cell lysates,

Lane 2: Jurkat whole cell lysates.

After electrophoresis, proteins were transferred to a membrane. Then the membrane was incubated with rabbit anti-CCR5 antigen affinity purified polyclonal antibody (BA0376-2) at a dilution of 1:1000 and probed with a goat anti-rabbit IgG-HRP secondary antibody (Catalog # BA1054). The signal is developed using ECL Plus Western Blotting Substrate (Catalog # AR1197). A specific band was detected for CCR5 at approximately 40 kDa. The expected band size for CCR5 is at 41 kDa.



Flow cytometry analysis of human PBMC cell(1:100) DyLight 488 conjugated goat anti-rabbit IgG(blue) was used as secondary antibody. Isotype control antibody (Green line) was rabbit IgG DyLight 488. Unlabelled sample (Red line).