

Basic Information

Product Name	Anti-TGFBR2 Antibody
Gene Name	TGFBR2
Source	Rabbit
Clonality	Polyclonal
Isotype	IgG
Species Reactivity	human, mouse, rat
Tested Application	WB
Contents	500 ug/ml antibody with PBS, 0.02% NaN ₃ , 1 mg/ml BSA and 50% glycerol.
Immunogen	A synthetic peptide corresponding to a sequence in the middle region of human TGF beta Receptor II, identical to the related rat and mouse sequences.
Concentration	500 ug/ml
Purification	Immunogen affinity purified.
Observed MW	70-85 kDa
Dilution Ratios	Western blot (WB):1:500-2000

Storage

12 months from date of receipt, -20°C as supplied.

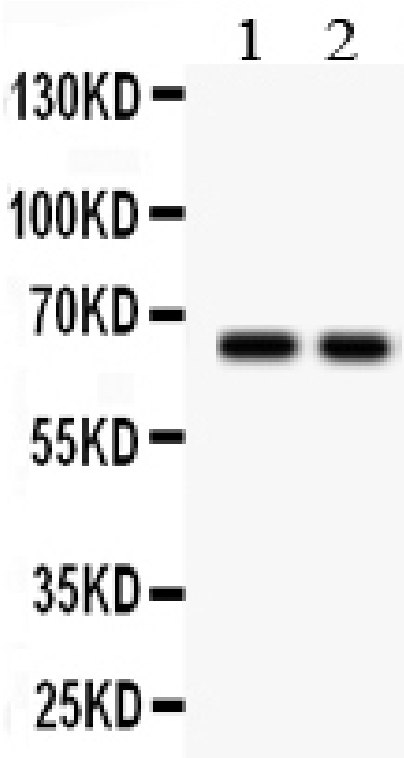
Background Information

TGFBR2(transforming growth factor, beta receptor II(70/80kDa)), also known as TGF-beta receptor type-2, TGFR-2, TGF-beta type II receptor, Transforming growth factor-beta receptor type II(TGF-beta receptor type II, TbetaR-II), is a member of the Ser/Thr protein kinase family and the TGFB receptor subfamily. A TGFBR2 cDNA encoding a deduced 565-amino acid protein with a calculated molecular mass of approximately 60 kD in length. The encoded protein is a transmembrane protein that has a protein kinase domain, forms a heterodimeric complex with another receptor protein, and binds TGF-beta. This receptor/ligand complex phosphorylates proteins, which then enter the nucleus and regulate the transcription of a subset of genes related to cell proliferation. Mutations in this gene have been associated with Marfan syndrome, Loeys-Deitz aortic aneurysm syndrome, Osler-Weber-Rendu syndrome, and the development of various types of tumors. Alternatively spliced transcript variants encoding different isoforms have been characterized. TGFBR2 may be a target of the EWS-FLI1 fusion protein found in Ewing sarcoma and related peripheral primitive neuroectodermal tumors.

Reference

Anti-TGFBR2 Antibody被引用在4文献中。

Selected Validation Data



Western blot analysis of TGFBR2 using anti-TGFBR2 antibody (BA0526-2).

The sample well of each lane was loaded with 30 ug of sample under reducing conditions.

Lane 1: HEPG2 whole cell lysates,

Lane 2: COLO320 whole cell lysates.

After electrophoresis, proteins were transferred to a membrane. Then the membrane was incubated with rabbit anti-TGFBR2 antigen affinity purified polyclonal antibody (BA0526-2) at a dilution of 1:1000 and probed with a goat anti-rabbit IgG-HRP secondary antibody (Catalog # BA1054). The signal is developed using ECL Plus Western Blotting Substrate (Catalog # AR1197). A specific band was detected for TGFBR2 at approximately 70-85 kDa. The expected band size for TGFBR2 is at 65 kDa.