

Basic Information

Product Name	Anti-ABCC1 Antibody	
Gene Name	ABCC1	
Source	Rabbit	
Clonality	Polyclonal	
Isotype	IgG	
Species Reactivity	human, mouse, rat	
Tested Application	WB, IHC	
Contents	500 ug/ml antibody with PBS, 0.02% NaN ₃ , 1 mg/ml BSA and 50% glycerol.	
Immunogen	A synthetic peptide corresponding to a sequence at the C-terminus of human MRP1, different from the related rat and mouse sequences by one amino acid.	
Concentration	500 ug/ml	
Purification	Immunogen affinity purified.	
Observed MW	220 kDa	
Dilution Ratios	Western blot (WB): 1:500-2000 Immunohistochemistry (IHC): 1:50-400 (Boiling the paraffin sections in 10mM citrate buffer, pH6.0, or PH8.0 EDTA repair liquid for 20 mins is required for the staining of formalin/paraffin sections.) Optimal working dilutions must be determined by end user.	

Storage

12 months from date of receipt, -20°C as supplied.

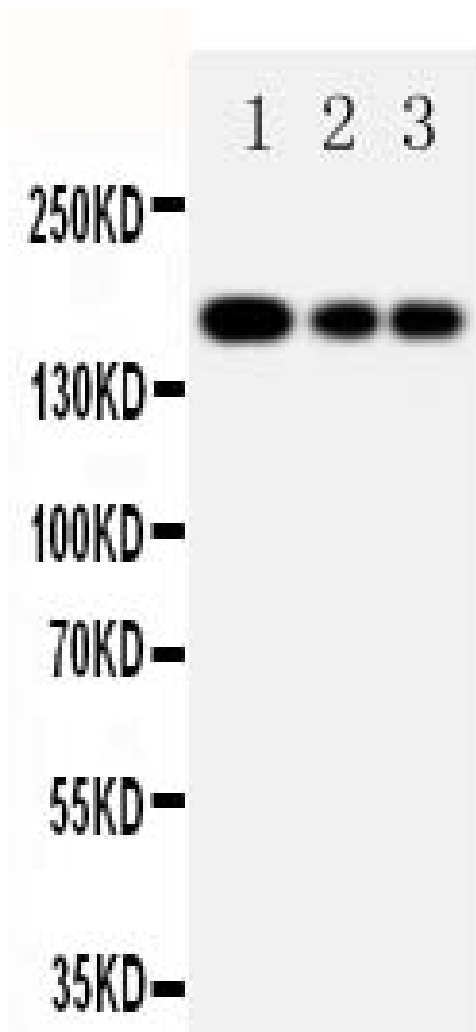
Background Information

Multidrug resistance-associated protein 1 (MRP1) is a protein that in humans is encoded by the ABCC1 gene. The protein encoded by this gene is a member of the superfamily of ATP-binding cassette (ABC) transporters. ABC proteins transport various molecules across extra- and intra-cellular membranes. ABC genes are divided into seven distinct subfamilies (ABC1, MDR/TAP, MRP, ALD, OABP, GCN20, White). This full transporter is a member of the MRP subfamily which is involved in multi-drug resistance. This protein functions as a multispecific organic anion transporter, with oxidized glutathione, cysteinyl leukotrienes, and activated aflatoxin B1 as substrates. This protein also transports glucuronides and sulfate conjugates of steroid hormones and bile salts. Alternatively spliced variants of this gene have been described but their full-length nature is unknown.

Reference

Anti-ABCC1 Antibody被引用在12文献中。

Selected Validation Data



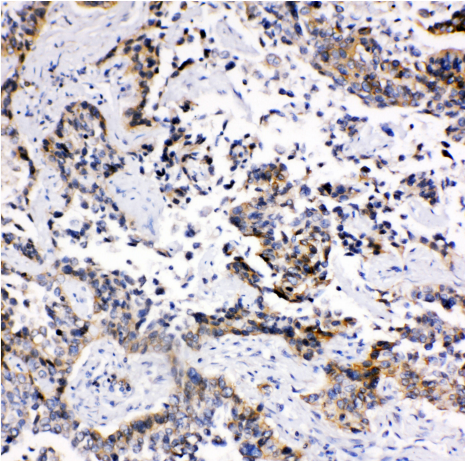
Western blot analysis of ABCC1 using anti-ABCC1 antibody (BA0567). The sample well of each lane was loaded with 30 ug of sample under reducing conditions.

Lane 1: JURKAT whole cell lysates,

Lane 2: CEM whole cell lysates,

Lane 3: A549 whole cell lysates.

After electrophoresis, proteins were transferred to a membrane. Then the membrane was incubated with rabbit anti-ABCC1 antigen affinity purified polyclonal antibody (BA0567) at a dilution of 1:1000 and probed with a goat anti-rabbit IgG-HRP secondary antibody (Catalog # BA1054). The signal is developed using ECL Plus Western Blotting Substrate (Catalog # AR1197). A specific band was detected for ABCC1 at approximately 220 kDa. The expected band size for ABCC1 is at 172 kDa.



IHC analysis of ABCC1 using anti-ABCC1 antibody (BA0567).

ABCC1 was detected in a paraffin-embedded section of human lung cancer tissue. The tissue section was incubated with rabbit anti-ABCC1 Antibody (BA0567) at a dilution of 1:200 and developed using HRP Conjugated Rabbit IgG Super Vision Assay Kit (Catalog # SV0002) with DAB (Catalog # AR1027) as the chromogen.