

## Basic Information

<b>Product Name</b>	Anti-Cyclin B1/CCNB1 Antibody
<b>Gene Name</b>	CCNB1
<b>Source</b>	Rabbit
<b>Clonality</b>	Polyclonal
<b>Isotype</b>	IgG
<b>Species Reactivity</b>	human, mouse, rat
<b>Tested Application</b>	WB
<b>Contents</b>	500 ug/ml antibody with PBS, 0.02% NaN <sub>3</sub> , 1 mg/ml BSA and 50% glycerol.
<b>Immunogen</b>	E.coli-derived human Cyclin B1 recombinant protein (Position: M1-V433). Human Cyclin B1 shares 86% and 85% amino acid (aa) sequences identity with mouse and rat Cyclin B1, respectively.
<b>Concentration</b>	500 ug/ml
<b>Purification</b>	Immunogen affinity purified.
<b>Observed MW</b>	55 kDa
<b>Dilution Ratios</b>	Western blot (WB):1:500-2000

## Storage

12 months from date of receipt, -20°C as supplied. 6 months 2 to 8°C after reconstitution. Avoid repeated freezing and thawing.

## Background Information

CCNB also known as Cyclin B1, is a protein that in humans is encoded by the CCNB1 gene, and it is mapped to 5q13.2. The protein encoded by this gene is a regulatory protein involved in mitosis. The gene product complexes with p34(cdc2) to form the maturation-promoting factor (MPF). Two alternative transcripts have been found, a constitutively expressed transcript and a cell cycle-regulated transcript, that is expressed predominantly during G2/M phase. The different transcripts result from the use of alternate transcription initiation sites. CCNB contributes to the switch-like all or none behavior of the cell in deciding to commit to mitosis. Its activation is well-regulated, and positive feedback loops ensure that once the cyclin B1-Cdk1 complex is activated, it is not deactivated.

## Reference

Anti-Cyclin B1/CCNB1 Antibody 被引用在4文献中。

## Selected Validation Data

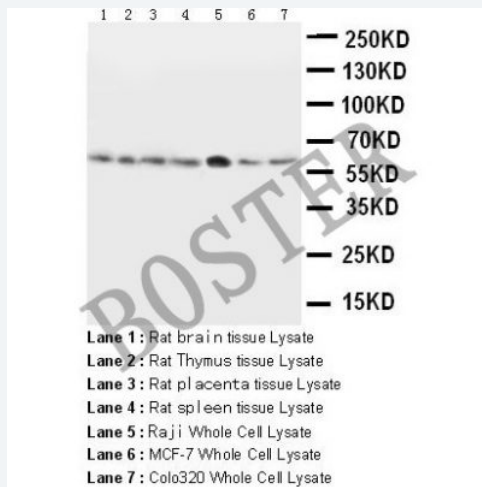


Figure 1. Western blot analysis of Cyclin B1/CCNB1 using anti-Cyclin B1/CCNB1 antibody (BA0766-2). The sample well of each lane was loaded with 30 ug of sample under reducing conditions.

Lane 1: rat brain tissue lysates,

Lane 2: rat thymus tissue lysates,

Lane 3: rat placenta tissue lysates,

Lane 4: rat spleen tissue lysates,

Lane 5: human Raji whole cell lysates,

Lane 6: human MCF-7 whole cell lysates,

Lane 7: human COLO320 whole cell lysates.

After electrophoresis, proteins were transferred to a membrane. Then the membrane was incubated with rabbit anti-Cyclin B1/CCNB1 antigen affinity purified polyclonal antibody (BA0766-2) at a dilution of 1:1000 and probed with a goat anti-rabbit IgG-HRP secondary antibody (Catalog # BA1054). The signal is developed using ECL Plus Western Blotting Substrate (Catalog # AR1197). A specific band was detected for Cyclin B1/CCNB1 at approximately 55 kDa. The expected band size for Cyclin B1/CCNB1 is at 48 kDa.