

## Basic Information

Product Name	Anti-DRD3 Antibody	
Gene Name	DRD3	
Source	Rabbit	
Clonality	Polyclonal	
Isotype	IgG	
Species Reactivity	human, mouse, rat	
Tested Application	WB, IHC	
Contents	500 ug/ml antibody with PBS, 0.02% NaN <sub>3</sub> , 1 mg/ml BSA and 50% glycerol.	
Immunogen	A synthetic peptide corresponding to a sequence at the C-terminus of human Dopamine Receptor D3, different from the related rat and mouse sequences by two amino acids.	
Concentration	500 ug/ml	
Purification	Immunogen affinity purified.	
Observed MW	49 kDa	
Dilution Ratios	Western blot (WB): 1:500-2000 Immunohistochemistry (IHC): 1:50-400 (Boiling the paraffin sections in 10mM citrate buffer, pH6.0, or PH8.0 EDTA repair liquid for 20 mins is required for the staining of formalin/paraffin sections.) Optimal working dilutions must be determined by end user.	

## Storage

12 months from date of receipt, -20°C as supplied.

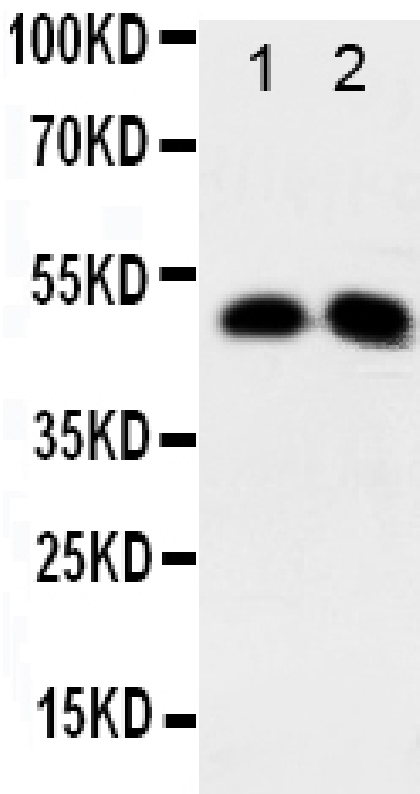
## Background Information

DRD3 is a dopamine receptor that differs in its pharmacology and signaling system from the D1 and D2 receptors and represents both an autoreceptor and a postsynaptic receptor. DRD3 is localized to limbic areas of the brain, which are associated with cognitive, emotional, and endocrine functions. The DRD3 gene, which is mapped to chromosome 3, is like the DRD2 gene but unlike most other members of this superfamily and it contains introns, 5 in number. The position of 2 of the introns corresponds to that of introns in DRD2. The D3 receptor appeared to mediate some of the effects of antipsychotic drugs and drugs used in the treatment of Parkinson disease, which were previously thought to interact only with D2 receptors.

## Reference

Anti-DRD3 Antibody被引用在3文献中。

## Selected Validation Data

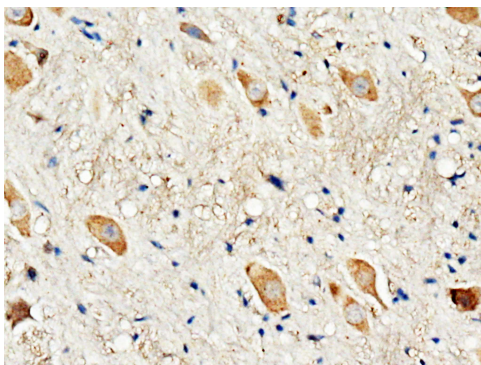


Western blot analysis of DRD3 using anti-DRD3 antibody (BA0805). The sample well of each lane was loaded with 30 ug of sample under reducing conditions.

Lane 1: Rat Testis tissue lysates,

Lane 2: Rat Brain tissue lysates.

After electrophoresis, proteins were transferred to a membrane. Then the membrane was incubated with rabbit anti-DRD3 antigen affinity purified polyclonal antibody (BA0805) at a dilution of 1:1000 and probed with a goat anti-rabbit IgG-HRP secondary antibody (Catalog # BA1054). The signal is developed using ECL Plus Western Blotting Substrate (Catalog # AR1197). A specific band was detected for DRD3 at approximately 49 kDa. The expected band size for DRD3 is at 44 kDa.



IHC analysis of DRD3 using anti-DRD3 antibody (BA0805).

DRD3 was detected in a paraffin-embedded section of rat brain tissue. The tissue section was incubated with rabbit anti-DRD3 Antibody (BA0805) at a dilution of 1:200 and developed using HRP Conjugated Rabbit IgG Super Vision Assay Kit (Catalog # SV0002) with DAB (Catalog # AR1027) as the chromogen.