

## Basic Information

<b>Product Name</b>	Anti-FOSB Antibody
<b>Gene Name</b>	FOSB
<b>Source</b>	Rabbit
<b>Clonality</b>	Polyclonal
<b>Isotype</b>	IgG
<b>Species Reactivity</b>	human, mouse, rat, rabbit
<b>Tested Application</b>	IHC
<b>Contents</b>	500 ug/ml antibody with PBS, 0.02% NaN <sub>3</sub> , 1 mg/ml BSA and 50% glycerol.
<b>Immunogen</b>	Polypeptide
<b>Concentration</b>	500 ug/ml
<b>Purification</b>	Immunogen affinity purified.
<b>Dilution Ratios</b>	Immunohistochemistry in paraffin section IHC(P): 1:50-400 (Boiling the paraffin sections in 10mM citrate buffer,pH6.0,or PH8.0 EDTA repair liquid for 20 mins is required for the staining of formalin/paraffin sections.) Optimal working dilutions must be determined by end user.

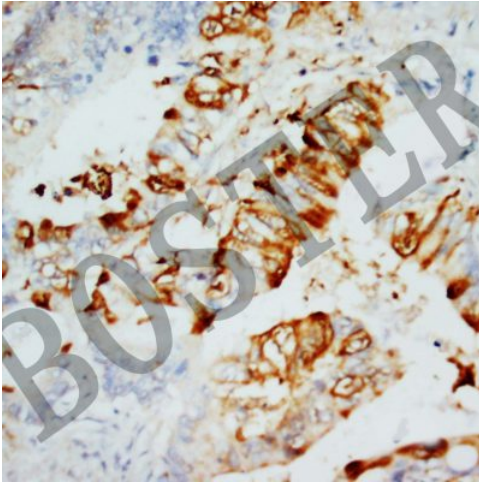
## Storage

12 months from date of receipt, -20°C as supplied.

## Background Information

The Fos gene family consists of 4 members: FOS, FOSB, FOSL1, and FOSL2. These genes encode leucine zipper proteins that can dimerize with proteins of the JUN family, thereby forming the transcription factor complex AP-1. As such, the FOS proteins have been implicated as regulators of cell proliferation, differentiation, and transformation. Alternatively spliced transcript variants encoding different isoforms have been found for this gene.

## Selected Validation Data



IHC analysis of FOSB using anti-FOSB antibody (BA0866-1).

FOSB was detected in a paraffin-embedded section of human endometrial cancer tissue. The tissue section was incubated with rabbit anti-FOSB Antibody (BA0866-1) at a dilution of 1:200 and developed using HRP Conjugated Rabbit IgG Super Vision Assay Kit (Catalog # SV0002) with DAB (Catalog # AR1027) as the chromogen.