

## Basic Information

<b>Product Name</b>	Anti-MT1-MMP/MMP14 Antibody	
<b>Gene Name</b>	MMP14	
<b>Source</b>	Rabbit	
<b>Clonality</b>	Polyclonal	
<b>Isotype</b>	IgG	
<b>Species Reactivity</b>	human, mouse, rat	
<b>Tested Application</b>	IHC, WB	
<b>Contents</b>	500 ug/ml antibody with PBS, 0.02% NaN <sub>3</sub> , 1 mg/ml BSA and 50% glycerol.	
<b>Immunogen</b>	A synthetic peptide corresponding to a sequence at the C-terminus of human MMP14, different from the related mouse and rat sequences by one amino acid.	
<b>Concentration</b>	500 ug/ml	
<b>Purification</b>	Immunogen affinity purified.	
<b>Observed MW</b>	60-65 kDa	
<b>Dilution Ratios</b>	Western blot (WB): 1:500-2000 Immunohistochemistry (IHC): 1:50-400 (Boiling the paraffin sections in 10mM citrate buffer, pH6.0, or PH8.0 EDTA repair liquid for 20 mins is required for the staining of formalin/paraffin sections.) Optimal working dilutions must be determined by end user.	

## Storage

12 months from date of receipt, -20°C as supplied.

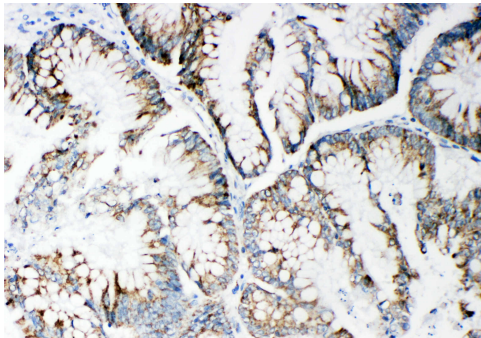
## Background Information

Matrix metalloproteinase-14, also called MT-MMP 1, is an enzyme that in humans is encoded by the MMP14 gene. The protein encoded by this gene is a member of the membrane-type MMP subfamily. This gene is mapped to 14q11.2. Proteins of the matrix metalloproteinase (MMP) family are involved in the breakdown of extracellular matrix in normal physiological processes, such as embryonic development, reproduction, and tissue remodeling, as well as in disease processes, such as arthritis and metastasis. This gene may be involved in actin cytoskeleton reorganization by cleaving PTK7. It acts as a positive regulator of cell growth and migration via activation of MMP15.

## Reference

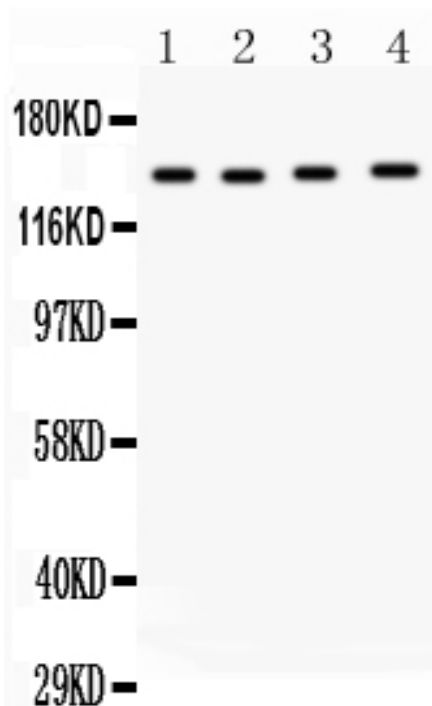
Anti-MT1-MMP/MMP14 Antibody被引用在14文献中。

## Selected Validation Data



IHC analysis of MT1-MMP/MMP14 using anti-MT1-MMP/MMP14 antibody (BA1278).

MT1-MMP/MMP14 was detected in a paraffin-embedded section of human intestinal cancer tissue. The tissue section was incubated with rabbit anti-MT1-MMP/MMP14 Antibody (BA1278) at a dilution of 1:200 and developed using HRP Conjugated Rabbit IgG Super Vision Assay Kit (Catalog # SV0002) with DAB (Catalog # AR1027) as the chromogen.



Western blot analysis of MT1-MMP/MMP14 using anti-MT1-MMP/MMP14 antibody (BA1278). The sample well of each lane was loaded with 30 ug of sample under reducing conditions.

Lane 1: Rat Spleen tissue lysates at 50ug,

Lane 2: Human Placenta tissue lysates at 50ug,

Lane 3: HELA whole cell lysates at 40ug,

Lane 4: A549 whole cell lysates at 40ug.

After electrophoresis, proteins were transferred to a membrane. Then the membrane was incubated with rabbit anti-MT1-MMP/MMP14 antigen affinity purified polyclonal antibody (BA1278) at a dilution of 1:1000 and probed with a goat anti-rabbit IgG-HRP secondary antibody (Catalog # BA1054). The signal is developed using ECL Plus Western Blotting Substrate (Catalog # AR1197). A specific band was detected for MT1-MMP/MMP14 at approximately 60-65 kDa. The expected band size for MT1-MMP/MMP14 is at 66 kDa.

Product datasheet

## Anti-MT1-MMP/MMP14 Antibody

Catalog Number: **BA1278**



antibody and ELISA experts

**BOSTER BIOLOGICAL TECHNOLOGY**

Building C21, 3rd to 5th Floors, Optics Valley Biopharmaceutical Accelerator,  
East Lake High-Tech Development Zone, Wuhan.

**Web:** [www.boster.com](http://www.boster.com) **Phone:** 027-67845390/1/2 **Email:** [boster@boster.com](mailto:boster@boster.com)