

Basic Information

Product Name	Anti-Plasminogen/PLG Antibody	
Gene Name	PLG	
Source	Rabbit	
Clonality	Polyclonal	
Isotype	IgG	
Species Reactivity	human	
Tested Application	WB, IHC, ELISA	
Contents	500 ug/ml antibody with PBS, 0.02% NaN ₃ , 1 mg/ml BSA and 50% glycerol.	
Immunogen	E. coli-derived human Angiostatin K1-3 recombinant protein(Position: C103-C352).	
Concentration	500 ug/ml	
Purification	Immunogen affinity purified.	
Observed MW	90 kDa	
Dilution Ratios	Western blot (WB): 1:500-2000 Immunohistochemistry (IHC): 1:50-400 Enzyme linked immunosorbent assay (ELISA): 1:100-1000 (Boiling the paraffin sections in 10mM citrate buffer,pH6.0,or PH8.0 EDTA repair liquid for 20 mins is required for the staining of formalin/paraffin sections.) Optimal working dilutions must be determined by end user.	

Storage

12 months from date of receipt, -20℃ as supplied.

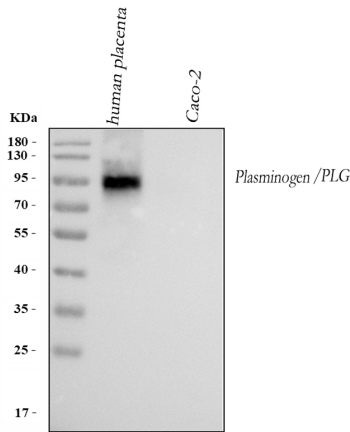
Background Information

Ang K1-3 is a single, non-glycosylated polypeptide chain containing 259 amino acids. It represents a proteolytic fragment of plasminogen containing the first three kringle structures. Ang K1-3 reduces endothelial cell proliferation and acts as a potent inhibitor of angiogenesis and tumor growth. It displays increased inhibitory activity(ED₅₀ = 70nM) relative to kringles 1-4(ED₅₀ = 135nM).

Reference

Anti-Plasminogen/PLG Antibody被引用在1文献中。

Selected Validation Data

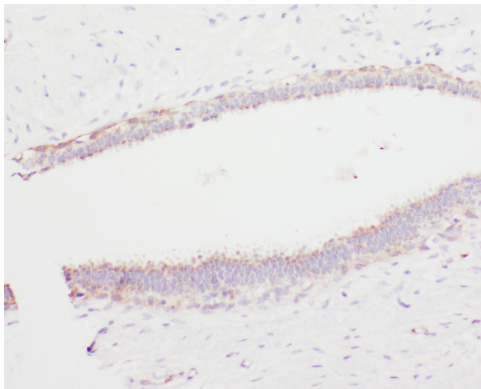


Western blot analysis of Plasminogen/PLG using anti-Plasminogen/PLG antibody (BA13076). The sample well of each lane was loaded with 30 ug of sample under reducing conditions.

Lane 1: human placenta tissue lysates,

Lane 2: human Caco-2 whole cell lysates.

After electrophoresis, proteins were transferred to a membrane. Then the membrane was incubated with rabbit anti-Plasminogen/PLG antigen affinity purified polyclonal antibody (BA13076) at a dilution of 1:1000 and probed with a goat anti-rabbit IgG-HRP secondary antibody (Catalog # BA1054). The signal is developed using ECL Plus Western Blotting Substrate (Catalog # AR1197). A specific band was detected for Plasminogen/PLG at approximately 90-100 kDa. The expected band size for Plasminogen/PLG is at 91 kDa.



IHC analysis of Plasminogen/PLG using anti-Plasminogen/PLG antibody (BA13076).

Plasminogen/PLG was detected in a paraffin-embedded section of human mammary cancer tissue. Biotinylated goat anti-rabbit IgG was used as secondary antibody. The tissue section was incubated with rabbit anti-Plasminogen/PLG Antibody (BA13076) at a dilution of 1:200 and developed using Streptavidin-Biotin-Complex (SABC) (Catalog # SA1022) with DAB (Catalog # AR1027) as the chromogen.