

## Basic Information

Product Name	Anti-PKC Alpha/PRKCA Antibody	
Gene Name	PRKCA	
Source	Rabbit	
Clonality	Polyclonal	
Isotype	IgG	
Species Reactivity	human, mouse, rat	
Tested Application	WB, IHC	
Contents	500 ug/ml antibody with PBS, 0.02% NaN <sub>3</sub> , 1 mg/ml BSA and 50% glycerol.	
Immunogen	A synthetic peptide corresponding to a sequence at the N-terminus of human PRKCA different from the related rat and mouse sequences by one amino acid.	
Concentration	500 ug/ml	
Purification	Immunogen affinity purified.	
Observed MW	77 kDa	
Dilution Ratios	Western blot (WB): 1:500-2000 Immunohistochemistry (IHC): 1:50-400 (Boiling the paraffin sections in 10mM citrate buffer, pH6.0, or PH8.0 EDTA repair liquid for 20 mins is required for the staining of formalin/paraffin sections.) Optimal working dilutions must be determined by end user.	

## Storage

12 months from date of receipt, -20°C as supplied.

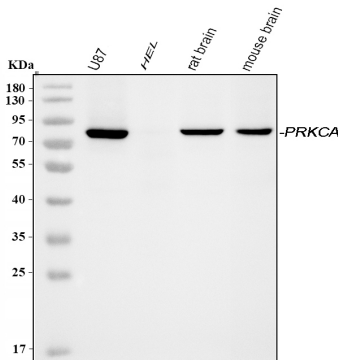
## Background Information

Protein kinase C(PKC) is the major phorbol ester receptor. Activation of PKC by calcium ions and the second messenger diacylglycerol is thought to play a central role in the induction of cellular responses to a variety of ligand-receptor systems and in the regulation of cellular responsiveness to external stimuli. Three of these, termed alpha, beta and gamma, are highly homologous. PRKCA1 is mapped to 17q22-q23.2. PKC-alpha regulates cardiac contractility and propensity toward heart failure.

## Reference

Anti-PKC Alpha/PRKCA Antibody被引用在8文献中。

## Selected Validation Data



Western blot analysis of PKC Alpha/PRKCA using anti-PKC Alpha/PRKCA antibody (BA1355). The sample well of each lane was loaded with 30 ug of sample under reducing conditions.

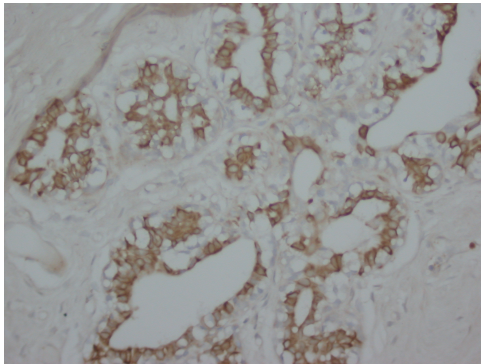
Lane 1: U87 whole cell lysates,

Lane 2: HEL whole cell lysates,

Lane 3: rat brain tissue lysates,

Lane 4: mouse brain tissue lysates.

After electrophoresis, proteins were transferred to a membrane. Then the membrane was incubated with rabbit anti-PKC Alpha/PRKCA antigen affinity purified polyclonal antibody (BA1355) at a dilution of 1:1000 and probed with a goat anti-rabbit IgG-HRP secondary antibody (Catalog # BA1054). The signal is developed using ECL Plus Western Blotting Substrate (Catalog # AR1197). A specific band was detected for PKC Alpha/PRKCA at approximately 77 kDa. The expected band size for PKC Alpha/PRKCA is at 77 kDa.



IHC analysis of PKC Alpha/PRKCA using anti-PKC Alpha/PRKCA antibody (BA1355).

PKC Alpha/PRKCA was detected in a paraffin-embedded section of human mammary cancer tissue. Biotinylated goat anti-rabbit IgG was used as secondary antibody. The tissue section was incubated with rabbit anti-PKC Alpha/PRKCA Antibody (BA1355) at a dilution of 1:200 and developed using Streptavidin-Biotin-Complex (SABC) (Catalog # SA1022) with DAB (Catalog # AR1027) as the chromogen.