

Basic Information

| | |
|--------------------|--|
| Product Name | Anti-CDC6 Antibody |
| Gene Name | CDC6 |
| Source | Rabbit |
| Clonality | Polyclonal |
| Isotype | IgG |
| Species Reactivity | human, mouse, rat |
| Tested Application | IHC |
| Contents | 500 ug/ml antibody with PBS, 0.02% NaN ₃ , 1 mg/ml BSA and 50% glycerol. |
| Immunogen | Polypeptide |
| Concentration | 500 ug/ml |
| Purification | Ascites |
| Dilution Ratios | Immunohistochemistry (IHC): 1:50-400 (Boiling the paraffin sections in 10mM citrate buffer, pH6.0, or PH8.0 EDTA repair liquid for 20 mins is required for the staining of formalin/paraffin sections.) Optimal working dilutions must be determined by end user. |

Storage

12 months from date of receipt, -20°C as supplied.

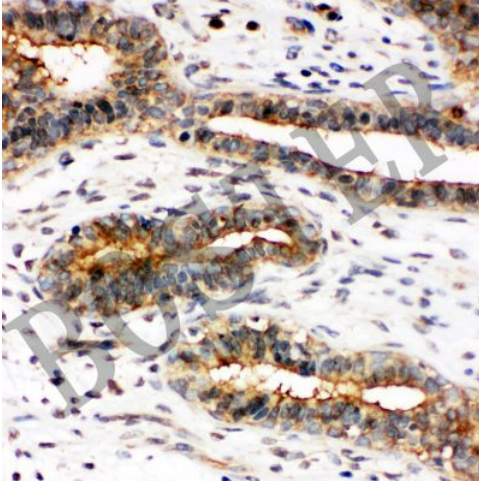
Background Information

The protein encoded by this gene is highly similar to *Saccharomyces cerevisiae* Cdc6, a protein essential for the initiation of DNA replication. This protein functions as a regulator at the early steps of DNA replication. It localizes in cell nucleus during cell cycle G1, but translocates to the cytoplasm at the start of S phase. The subcellular translocation of this protein during cell cycle is regulated through its phosphorylation by Cdks. Transcription of this protein was reported to be regulated in response to mitogenic signals through transcriptional control mechanism involving E2F proteins.

Reference

Anti-CDC6 Antibody 被引用在1文献中。

Selected Validation Data



IHC analysis of CDC6 using anti-CDC6 antibody (BA1726-1).

CDC6 was detected in a paraffin-embedded section of human breast cancer tissue. Biotinylated goat anti-rabbit IgG was used as secondary antibody. The tissue section was incubated with rabbit anti-CDC6 Antibody (BA1726-1) at a dilution of 1:200 and developed using Streptavidin-Biotin-Complex (SABC) (Catalog # SA1022) with DAB (Catalog # AR1027) as the chromogen.