

Basic Information

Product Name	Anti-LAMC1/LAMC2/LAMC3 Antibody	
Gene Name	Lamc1/Lamc2/Lamc3	
Source	Rabbit	
Clonality	Polyclonal	
Isotype	IgG	
Species Reactivity	mouse, rat	
Tested Application	IHC	
Contents	500 ug/ml antibody with PBS, 0.02% NaN ₃ , 1 mg/ml BSA and 50% glycerol.	
Immunogen	Human fibroblasts derived.	
Concentration	500 ug/ml	
Purification	Immunogen affinity purified.	
Dilution Ratios	Immunohistochemistry (IHC): 1:50-400 (Boiling the paraffin sections in 10mM citrate buffer,pH6.0,or PH8.0 EDTA repair liquid for 20 mins is required for the staining of formalin/paraffin sections.) Optimal working dilutions must be determined by end user.	

Storage

12 months from date of receipt, -20°C as supplied.

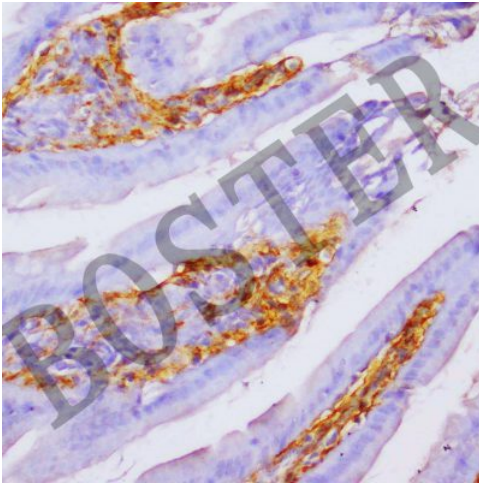
Background Information

Laminins are major proteins in the basal lamina (one of the layers of the basement membrane), a protein network foundation for most cells and organs. Laminins form independent networks and are associated with type IV collagen networks via entactin, fibronectin, and perlecan. They are important and biologically active parts of the basal lamina, influencing cell differentiation, migration, and adhesion, as well as phenotype and survival. Laminins are trimeric proteins that contain an α -chain, a β -chain, and a γ -chain, found in five, four, and three genetic variants, respectively. Laminins critically contribute to cell attachment and differentiation, cell shape and movement, maintenance of tissue phenotype, and promotion of tissue survival.

Reference

Anti-LAMC1/LAMC2/LAMC3 Antibody被引用在9文献中。

Selected Validation Data



IHC analysis of LAMC1/LAMC2/LAMC3 using anti-LAMC1/LAMC2/LAMC3 antibody (BA1761-1) .

LAMC1/LAMC2/LAMC3 was detected in a paraffin-embedded section of mouse small intestine tissue. The tissue section was incubated with rabbit anti-LAMC1/LAMC2/LAMC3 Antibody (BA1761-1) at a dilution of 1:200 and developed using HRP Conjugated Rabbit IgG Super Vision Assay Kit (Catalog # SV0002) with DAB (Catalog # AR1027) as the chromogen.