

Basic Information

Product Name	Anti-PGC1 Alpha/PPARGC1A Antibody
Gene Name	PPARGC1A
Source	Rabbit
Clonality	Polyclonal
Isotype	IgG
Species Reactivity	human, mouse, rat
Tested Application	IHC
Contents	500 ug/ml antibody with PBS, 0.02% NaN ₃ , 1 mg/ml BSA and 50% glycerol.
Immunogen	Polypeptide
Concentration	500 ug/ml
Purification	Immunogen affinity purified.
Dilution Ratios	Immunohistochemistry in paraffin section IHC-(P): 1:50-400 (Boiling the paraffin sections in 10mM citrate buffer, pH6.0, or PH8.0 EDTA repair liquid for 20 mins is required for the staining of formalin/paraffin sections.) Optimal working dilutions must be determined by end user.

Storage

12 months from date of receipt, -20°C as supplied. 6 months 2 to 8°C after reconstitution. Avoid repeated freezing and thawing.

Background Information

The protein encoded by this gene is a transcriptional coactivator that regulates the genes involved in energy metabolism. This protein interacts with PPARGamma, which permits the interaction of this protein with multiple transcription factors. This protein can interact with, and regulate the activities of, cAMP response element binding protein (CREB) and nuclear respiratory factors (NRFs). It provides a direct link between external physiological stimuli and the regulation of mitochondrial biogenesis, and is a major factor that regulates muscle fiber type determination. This protein may be also involved in controlling blood pressure, regulating cellular cholesterol homeostasis, and the development of obesity.

Reference

Anti-PGC1 Alpha/PPARGC1A Antibody被引用在2文献中。

Product datasheet

Anti-PGC1 Alpha/PPARGC1A Antibody

Catalog Number: **BA2816-1**

BOSTER

antibody and ELISA experts

BOSTER BIOLOGICAL TECHNOLOGY

Building C21, 3rd and 4th floors, Optics Valley Biomedical Accelerator,
Wuhan East Lake High-tech Development Zone

Web: www.boster.com **Phone:** 027-67845390 **Email:** boster@boster.com

Selected Validation Data

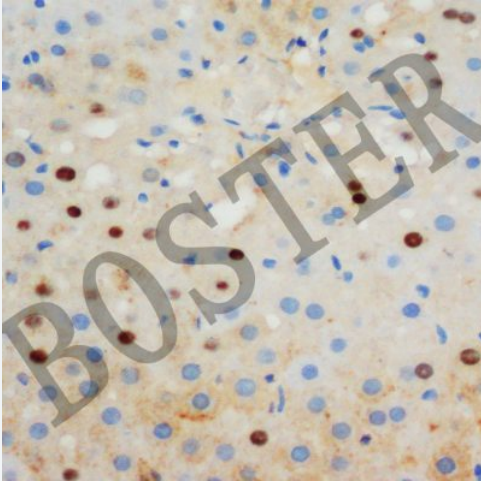


Figure 1. IHC analysis of PGC1 Alpha/PPARGC1A using anti-PGC1 Alpha/PPARGC1A antibody (BA2816-1).

PGC1 Alpha/PPARGC1A was detected in a paraffin-embedded section of rat liver tissue. Biotinylated goat anti-rabbit IgG was used as secondary antibody. The tissue section was incubated with rabbit anti-PGC1 Alpha/PPARGC1A Antibody (BA2816-1) at a dilution of 1:200 and developed using Streptavidin-Biotin-Complex (SABC) (Catalog # SA1022) with DAB (Catalog # AR1022) as the chromogen.