

Basic Information

Product Name	Anti-GAPDH Antibody	
Gene Name	GAPDH	
Source	Rabbit	
Clonality	Polyclonal	
Isotype	IgG	
Species Reactivity	human, mouse, rat, monkey, chicken	
Tested Application	WB, IHC	
Contents	500 ug/ml antibody with PBS, 0.02% NaN ₃ , 1 mg/ml BSA and 50% glycerol.	
Immunogen	A synthetic peptide corresponding to a sequence at the N-terminus of human GAPDH, identical to the related mouse and rat sequences.	
Purification	Immunogen affinity purified.	
Observed MW	36 kDa	
Dilution Ratios	Western blot (WB): 1:1000-5000 Immunohistochemistry (IHC): 1:50-400 (Boiling the paraffin sections in 10mM citrate buffer, pH6.0, or PH8.0 EDTA repair liquid for 20 mins is required for the staining of formalin/paraffin sections.) Optimal working dilutions must be determined by end user.	

Storage

12 months from date of receipt, -20°C as supplied.

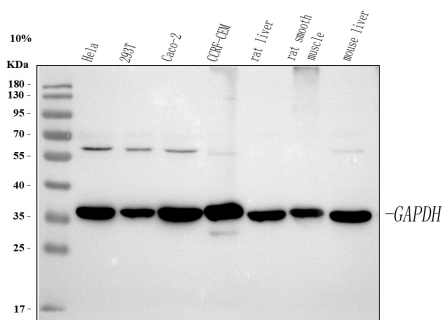
Background Information

Glyceraldehyde-3-phosphate dehydrogenase catalyzes an important energy-yielding step in carbohydrate metabolism, the reversible oxidative phosphorylation of glyceraldehyde-3-phosphate in the presence of inorganic phosphate and nicotinamide adenine dinucleotide (NAD). The enzyme is thought to be a tetramer of identical chains. Several highly homologous glyceraldehyde-3-phosphate dehydrogenase (GAPD)-related sequences have been identified previously in human DNA by Southern blot analysis. Protein studies have identified only a single expressed locus for this major glycolytic enzyme, and this maps to chromosome 12p13. Glyceraldehyde-3-phosphate dehydrogenase (GAPDH) is a critical regulator of CICD, it mediates an elevation in glycolysis and enhanced autophagy that cooperate to protect cells from CICD.

Reference

Anti-GAPDH Antibody被引用在207文献中。

Selected Validation Data



Western blot analysis of anti-GAPDH antibody (BA2913). The sample well of each lane was loaded with 30 ug of sample under reducing conditions.

Lane 1: human HeLa whole cell lysates,

Lane 2: human 293T whole cell lysates,

Lane 3: human Caco-2 whole cell lysates,

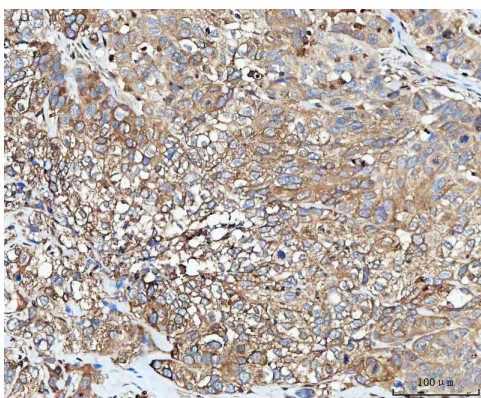
Lane 4: human CCRF-CEM whole cell lysates,

Lane 5: rat liver tissue lysates,

Lane 6: rat smooth muscle tissue lysates,

Lane 7: mouse liver tissue lysates.

After electrophoresis, proteins were transferred to a membrane. Then the membrane was incubated with rabbit anti-GAPDH antigen affinity purified polyclonal antibody (BA2913) and probed with a goat anti-rabbit IgG-HRP secondary antibody (Catalog # BA1054). The signal is developed using ECL Plus Western Blotting Substrate (Catalog # AR1197). A specific band was detected for GAPDH at approximately 36 kDa. The expected band size for GAPDH is at 36 kDa.



IHC analysis of GAPDH using anti-GAPDH antibody (BA2913).

GAPDH was detected in a paraffin-embedded section of human bladder urothelial carcinoma tissue. The tissue section was developed using HRP Conjugated Rabbit IgG Super Vision Assay Kit (Catalog # SV0002) with DAB (Catalog # AR1027) as the chromogen.