

## Basic Information

<b>Product Name</b>	Anti-BRAF Antibody
<b>Gene Name</b>	BRAF
<b>Source</b>	Rabbit
<b>Clonality</b>	Polyclonal
<b>Isotype</b>	IgG
<b>Species Reactivity</b>	human, mouse, rat
<b>Tested Application</b>	WB
<b>Contents</b>	500 ug/ml antibody with PBS, 0.02% NaN <sub>3</sub> , 1 mg/ml BSA and 50% glycerol.
<b>Immunogen</b>	A synthetic peptide corresponding to a sequence in the middle region of human B Raf, identical to the related rat and mouse sequences.
<b>Concentration</b>	500 ug/ml
<b>Purification</b>	Immunogen affinity purified.
<b>Observed MW</b>	85 kDa
<b>Dilution Ratios</b>	Western blot (WB):1:500-2000

## Storage

12 months from date of receipt, -20°C as supplied. 6 months 2 to 8°C after reconstitution. Avoid repeated freezing and thawing.

## Background Information

BRAF(v-raf murine sarcoma viral oncogene homolog B1) is a human gene that makes a protein called B-Raf, also known as ONCOGENE BRAF, BRAF1, RAFB1, Proto-oncogene B-Raf p94, v-Raf murine sarcoma viral oncogene homolog B1, proto-oncogene B-Raf, v-Raf murine sarcoma viral oncogene homolog B1, while the protein is more formally known as serine/threonine-protein kinase B-Raf. BRAF deduced 651-amino acid protein has a calculated molecular mass of 72.5 kD. Northern blot analysis detected transcripts of 10 and 13 kb in cerebrum, fetal brain, and placenta and transcripts of 2.6 and 4.5 kb in testis. Testis also showed lower expression of the 10- and 13-kb transcripts. B-Raf is a member of the Raf kinase family of serine/threonine-specific protein kinases. This protein plays a role in regulating the MAP kinase/ERKs signaling pathway, which affects cell division, differentiation, and secretion.

Product datasheet

## Anti-BRAF Antibody

Catalog Number: **BA2958-2**

# BOSTER

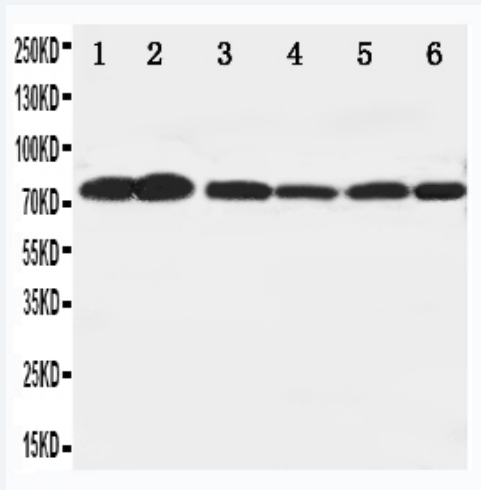
antibody and ELISA experts

**BOSTER BIOLOGICAL TECHNOLOGY**

Building C21, 3rd and 4th floors, Optics Valley Biomedical Accelerator,  
Wuhan East Lake High-tech Development Zone

**Web:** [www.boster.com](http://www.boster.com) **Phone:** 027-67845390 **Email:** [boster@boster.com](mailto:boster@boster.com)

## Selected Validation Data



Lane 1: Rat Brain Tissue Lysate Lane 2: Rat Testis Tissue

Lysate Lane 3: Rat Liver Tissue Lysate Lane 4: SW620 Cell

Lysate Lane 5: COLO320 Cell Lysate Lane 6: PC-12 Cell Lysate