

Basic Information

Product Name	Anti-PKM2/PKM Antibody
Gene Name	PKM
Source	Rabbit
Clonality	Polyclonal
Isotype	IgG
Species Reactivity	human
Tested Application	WB
Contents	500 ug/ml antibody with PBS, 0.02% NaN ₃ , 1 mg/ml BSA and 50% glycerol.
Immunogen	A synthetic peptide corresponding to a sequence at the N-terminus of human PKM2, identical to the related rat and mouse sequences.
Concentration	500 ug/ml
Purification	Immunogen affinity purified.
Observed MW	58 kDa
Dilution Ratios	Western blot (WB):1:500-2000

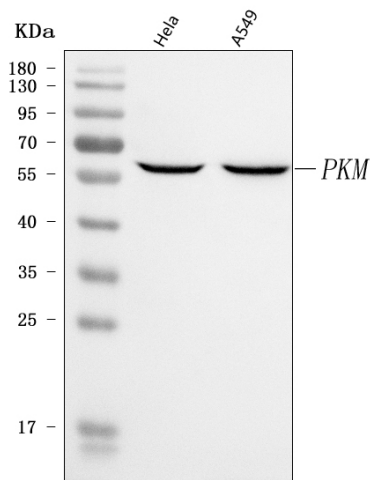
Storage

12 months from date of receipt, -20°C as supplied.

Background Information

PKM(Pyruvate Kinase, Muscle), also known as PK3 or PKM2, is an enzyme that in humans is encoded by the PKM gene. The activity of pyruvate kinase subtype M2 is increased by fructose 1, 6-bisphosphate(Fru-1, 6-P2). By in situ hybridization, Popescu and Cheng(1990) mapped the THBP1 gene to 15q24-q25.Ashizawa et al.(1991) manipulated the intracellular Fru-1, 6-P2 concentration in several mammalian cell lines, including human, by varying the glucose concentration in the media. Using a novel proteomic screen for phosphotyrosine-binding proteins, Christofk et al.(2008) observed that PKM2 binds directly and selectively to tyrosine-phosphorylated peptides.

Selected Validation Data



Western blot analysis of anti- PKM antibody (BA3006). The sample well of each lane was loaded with 30ug of sample under reducing conditions.

Lane 1: human HeLa whole cell lysates,

Lane 2: human A549 whole cell lysates.

Use rabbit anti- PKM 1:1000, probed with a goat anti-rabbit IgG-HRP secondary antibody. The signal is developed using an Enhanced Chemiluminescent detection (ECL) kit (Catalog#EK1002). A specific band was detected for PKM at approximately 58KD. The expected band size for PKM is at 58KD.