

Basic Information

Product Name	Anti-EIF2A/EIF2S1 Antibody
Gene Name	EIF2S1
Source	Rabbit
Clonality	Polyclonal
Isotype	IgG
Species Reactivity	human
Tested Application	WB,IHC
Contents	500 ug/ml antibody with PBS, 0.02% NaN ₃ , 1 mg/ml BSA and 50% glycerol.
Immunogen	A synthetic peptide corresponding to a sequence in the middle region of human EIF2S1.
Concentration	500 ug/ml
Purification	Immunogen affinity purified.
Observed MW	36 kDa
Dilution Ratios	Western blot (WB): 1:500-2000 Immunohistochemistry (IHC): 1:50-400 (Boiling the paraffin sections in 10mM citrate buffer,pH6.0,or PH8.0 EDTA repair liquid for 20 mins is required for the staining of formalin/paraffin sections.) Optimal working dilutions must be determined by end user.

Storage

12 months from date of receipt, -20°C as supplied. 6 months 2 to 8°C after reconstitution. Avoid repeated freezing and thawing.

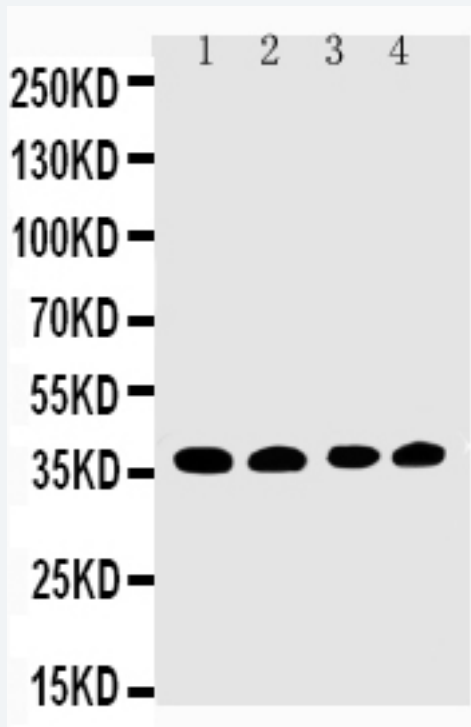
Background Information

EIF2S1(Eukaryotic Translation Initiation Factor 2, Subunit 1), also called EIF2-alpha, is a protein that in humans is encoded by the EIF2S1 gene. Hartz(2010) mapped the EIF2S1 gene to chromosome 14q23.3 based on an alignment of the EIF2S1 sequence with the genomic sequence(GRCh37). Ernst et al.(1987) stated that protein synthesis is inhibited due to phosphorylation of Eif2-alpha in hemin-deprived rabbit reticulocyte lysates. HeLa cells subjected to heat shock, serum deprivation, or interferon treatment followed by virus infection also show a correlation between EIF2-alpha phosphorylation and translational repression. Jacob et al.(1989) found that the alpha-Pal transcription factor bound to 2 palindromic sites within the EIF2-alpha promoter and was essential for transcription of the EIF2-alpha gene.

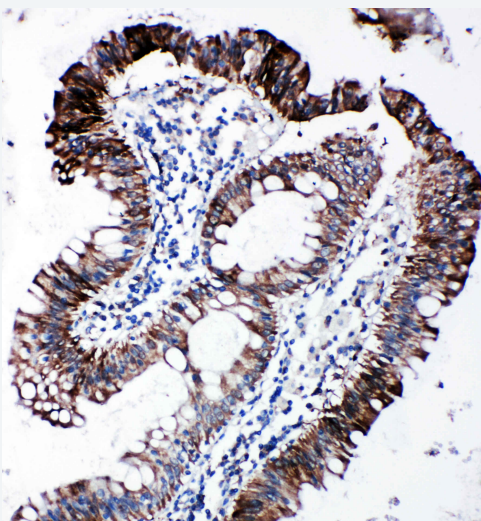
Reference

Anti-EIF2A/EIF2S1 Antibody被引用在2文献中。

Selected Validation Data



Lane 1: COLO320 Cell Lysate
Lane 2: CEM Cell Lysate
Lane 3: RAJI Cell Lysate
Lane 4: HT1080 Cell Lysate



IHC(P): Human Intestinal Cancer Tissue

Product datasheet

Anti-EIF2A/EIF2S1 Antibody

Catalog Number: **BA3268**

BOSTER

antibody and ELISA experts

BOSTER BIOLOGICAL TECHNOLOGY

Building C21, 3rd and 4th floors, Optics Valley Biomedical Accelerator,
Wuhan East Lake High-tech Development Zone

Web: www.boster.com **Phone:** 027-67845390 **Email:** boster@boster.com