

Basic Information

Product Name	Anti-Canstatin/COL4A2 Antibody	
Gene Name	COL4A2	
Source	Rabbit	
Clonality	Polyclonal	
Isotype	IgG	
Species Reactivity	human	
Tested Application	WB, IHC	
Contents	500 ug/ml antibody with PBS, 0.02% NaN ₃ , 1 mg/ml BSA and 50% glycerol.	
Immunogen	A synthetic peptide corresponding to a sequence at the C-terminus of human Canstatin/COL4A2, identical to the related rat and mouse sequences.	
Concentration	500 ug/ml	
Purification	Immunogen affinity purified.	
Observed MW	24-35 kDa	
Dilution Ratios	Western blot (WB): 1:500-2000 Immunohistochemistry (IHC): 1:50-400 (Boiling the paraffin sections in 10mM citrate buffer, pH6.0, or PH8.0 EDTA repair liquid for 20 mins is required for the staining of formalin/paraffin sections.) Optimal working dilutions must be determined by end user.	

Storage

12 months from date of receipt, -20°C as supplied. 6 months 2 to 8°C after reconstitution. Avoid repeated freezing and thawing.

Background Information

Canstatin, a cleavage product corresponding to the collagen alpha 2(IV) NC1 domain, possesses both anti-angiogenic and anti-tumor cell activity. It inhibits proliferation and migration of endothelial cells, reduces mitochondrial membrane potential, and induces apoptosis. Specifically induces Fas-dependent apoptosis and activates procaspase-8 and -9 activity. Ligand for alphavbeta3 and alphavbeta5 integrins.

Reference

Anti-Canstatin/COL4A2 Antibody被引用在10文献中。

Selected Validation Data

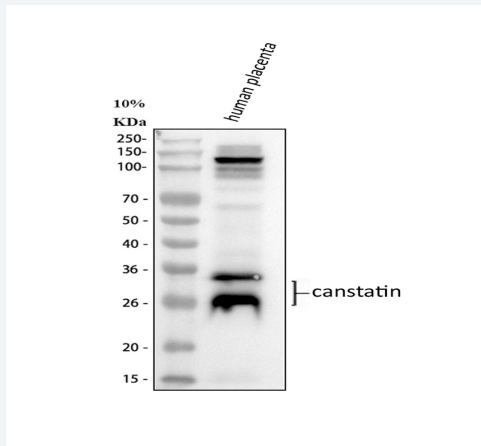


Figure 1. Western blot analysis of Canstatin/COL4A2 using anti-Canstatin/COL4A2 antibody (BA3626). The sample well of each lane was loaded with 30 ug of sample under reducing conditions.

Lane 1: human placenta tissue lysates.

After electrophoresis, proteins were transferred to a membrane. Then the membrane was incubated with rabbit anti-Canstatin/COL4A2 antigen affinity purified polyclonal antibody (BA3626) at a dilution of 1:1000 and probed with a goat anti-rabbit IgG-HRP secondary antibody (Catalog # BA1054). The signal is developed using ECL Plus Western Blotting Substrate (Catalog # AR1197). A specific band was detected for Canstatin/COL4A2 at approximately 24-35 kDa. The expected band size for Canstatin/COL4A2 is at 168 kDa.

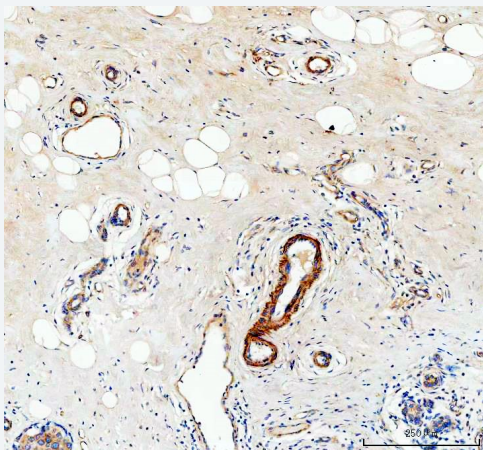


Figure 2. IHC analysis of Canstatin/COL4A2 using anti-Canstatin/COL4A2 antibody (BA3626) .

Canstatin/COL4A2 was detected in a paraffin-embedded section of human breast cancer tissue. The tissue section was incubated with rabbit anti-Canstatin/COL4A2 Antibody (BA3626) at a dilution of 1:200 and developed using HRP Conjugated Rabbit IgG Super Vision Assay Kit (Catalog # SV0002) with DAB (Catalog # AR1022) as the chromogen.