

Basic Information

| | | |
|---------------------------|--|--|
| Product Name | Anti-AIF/AIFM1 Antibody | |
| Gene Name | AIFM1 | |
| Source | Rabbit | |
| Clonality | Polyclonal | |
| Isotype | IgG | |
| Species Reactivity | human, mouse, rat | |
| Tested Application | WB, IHC, ICC/IF | |
| Contents | 500 ug/ml antibody with PBS, 0.02% NaN ₃ , 1 mg/ml BSA and 50% glycerol. | |
| Immunogen | A synthetic peptide corresponding to a sequence at the C-terminus of human AIF, identical to the related rat and mouse sequences. | |
| Concentration | 500 ug/ml | |
| Purification | Immunogen affinity purified. | |
| Observed MW | 67 kDa | |
| Dilution Ratios | Western blot (WB): 1:500-2000 Immunohistochemistry (IHC): 1:50-400 Immunocytochemistry/Immunofluorescence (ICC/IF): 1:50-400 (Boiling the paraffin sections in 10mM citrate buffer, pH6.0, or PH8.0 EDTA repair liquid for 20 mins is required for the staining of formalin/paraffin sections.) Optimal working dilutions must be determined by end user. | |

Storage

12 months from date of receipt, -20°C as supplied. 6 months 2 to 8°C after reconstitution. Avoid repeated freezing and thawing.

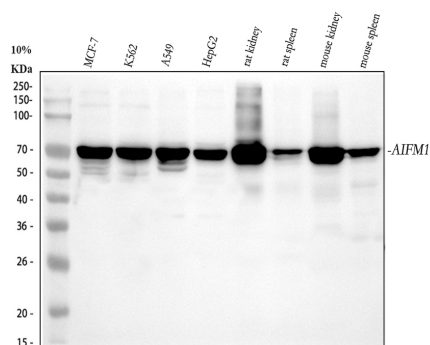
Background Information

Apoptosis-inducing factor 1, mitochondrial, also known as AIF or PDCD8 is a protein that in humans is encoded by the AIFM1 gene. AIFM1 gene is mapped to Xq26.1 based on an alignment of the AIFM1 sequence with the genomic sequence. This gene encodes a flavoprotein essential for nuclear disassembly in apoptotic cells, and it is found in the mitochondrial intermembrane space in healthy cells. Induction of apoptosis results in the translocation of this protein to the nucleus where it affects chromosome condensation and fragmentation. In addition, this gene product induces mitochondria to release the apoptogenic proteins cytochrome c and caspase-9. Mutations in this gene cause combined oxidative phosphorylation deficiency 6, which results in a severe mitochondrial encephalomyopathy. A related pseudogene has been identified on chromosome 10.

Reference

Anti-AIF/AIFM1 Antibody被引用在2文献中。

Selected Validation Data



Western blot analysis of AIF/AIFM1 using anti-AIF/AIFM1 antibody (BA3715). The sample well of each lane was loaded with 30 ug of sample under reducing conditions.

Lane 1: human MCF-7 whole cell lysates,

Lane 2: human K562 whole cell lysates,

Lane 3: human A549 whole cell lysates,

Lane 4: human HepG2 whole cell lysates,

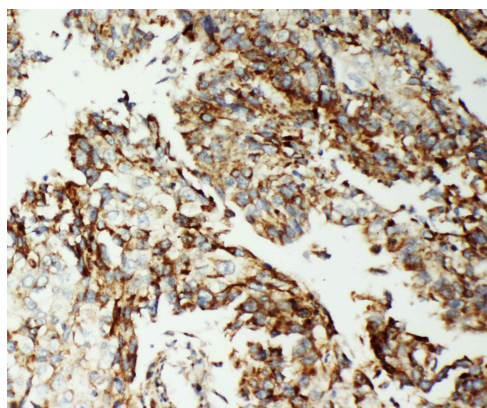
Lane 5: rat kidney tissue lysates,

Lane 6: rat spleen tissue lysates,

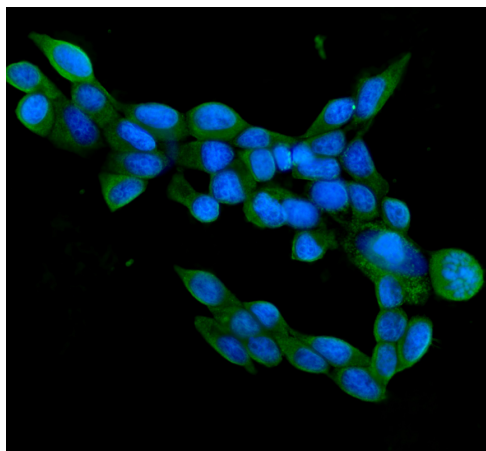
Lane 7: mouse kidney tissue lysates,

Lane 8: mouse spleen tissue lysates.

After electrophoresis, proteins were transferred to a membrane. Then the membrane was incubated with rabbit anti-AIF/AIFM1 antigen affinity purified polyclonal antibody (BA3715) at a dilution of 1:1000 and probed with a goat anti-rabbit IgG-HRP secondary antibody (Catalog # BA1054). The signal is developed using ECL Plus Western Blotting Substrate (Catalog # AR1197). A specific band was detected for AIF/AIFM1 at approximately 67 kDa. The expected band size for AIF/AIFM1 is at 67 kDa.



IHC analysis of AIF/AIFM1 using anti-AIF/AIFM1 antibody (BA3715). AIF/AIFM1 was detected in a paraffin-embedded section of human lung cancer tissue. The tissue section was incubated with rabbit anti-AIF/AIFM1 Antibody (BA3715) at a dilution of 1:200 and developed using HRP Conjugated Rabbit IgG Super Vision Assay Kit (Catalog # SV0002) with DAB (Catalog # AR1027) as the chromogen.



IF analysis of AIF/AIFM1 using anti-AIF/AIFM1 antibody (BA3715). AIF/AIFM1 was detected in an immunocytochemical section of MCF-7 cells. The section was incubated with rabbit anti-AIF/AIFM1 Antibody (BA3715) at a dilution of 1:100. DyLight®488 Conjugated Goat Anti-Rabbit IgG (Green) (Catalog # BA1127) was used as secondary antibody. The section was counterstained with DAPI (Catalog # AR1176) (Blue).