

## Basic Information

<b>Product Name</b>	Anti-c-Cbl/CBL Antibody
<b>Gene Name</b>	CBL
<b>Source</b>	Rabbit
<b>Clonality</b>	Polyclonal
<b>Isotype</b>	IgG
<b>Species Reactivity</b>	human, mouse, rat
<b>Tested Application</b>	WB
<b>Contents</b>	500 ug/ml antibody with PBS, 0.02% NaN <sub>3</sub> , 1 mg/ml BSA and 50% glycerol.
<b>Immunogen</b>	A synthetic peptide corresponding to a sequence at the C-terminus of human CBL, identical to the related rat and mouse sequences.
<b>Concentration</b>	500 ug/ml
<b>Purification</b>	Immunogen affinity purified.
<b>Observed MW</b>	120 kDa
<b>Dilution Ratios</b>	Western blot (WB):1:500-2000

## Storage

12 months from date of receipt, -20°C as supplied. 6 months 2 to 8°C after reconstitution. Avoid repeated freezing and thawing.

## Background Information

CBL(Cbl proto-oncogene) is also known as C-CBL, RNF55, CBL2 and E3 ubiquitin protein ligase. Wei et al.(1990) mapped the CBL gene to chromosome 11q23.3-qter by molecular characterization of the breakpoints in 2 somatic cell hybrids. The encoded protein is one of the enzymes required for targeting substrates for degradation by the proteasome. This protein mediates the transfer of ubiquitin from ubiquitin conjugating enzymes(E2) to specific substrates. This protein also contains an N-terminal phosphotyrosine binding domain that allows it to interact with numerous tyrosine-phosphorylated substrates and target them for proteasome degradation. As such it functions as a negative regulator of many signal transduction pathways. This gene has been found to be mutated or translocated in many cancers including acute myeloid leukaemia. Mutations in this gene are also the cause of Noonan syndrome-like disorder.

## Selected Validation Data

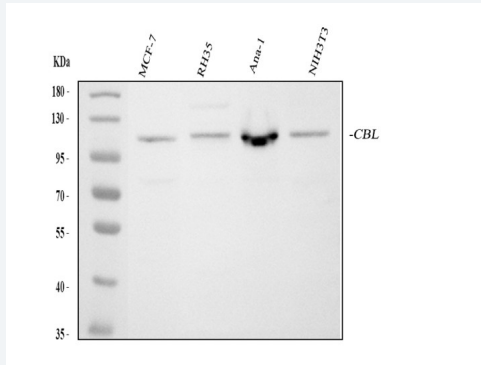


Figure 1. Western blot analysis of anti- CBL antibody (BA3809-2). The sample well of each lane was loaded with 50ug of sample under reducing conditions.

Lane 1: MCF-7 whole cell lysates,

Lane 2: RH35 whole cell lysates,

Lane 3: Ana-1 whole cell lysates,

Lane 4: NIH3T3 whole cell lysates.

Use rabbit anti- CBL 1:1000, probed with a goat anti-rabbit IgG- HRP secondary antibody. The signal is developed using an Enhanced Chemiluminescent detection (ECL) kit (Catalog # EK1002). A specific band was detected for CBL at approximately 120KD. The expected band size for CBL is at 100KD.