

Basic Information

Product Name	Anti-B23/NPM1 Antibody	
Gene Name	NPM1	
Source	Rabbit	
Clonality	Polyclonal	
Isotype	IgG	
Species Reactivity	human, mouse, rat	
Tested Application	WB, IHC, ICC/IF	
Contents	500 ug/ml antibody with PBS, 0.02% NaN ₃ , 1 mg/ml BSA and 50% glycerol.	
Immunogen	A synthetic peptide corresponding to a sequence at the N-terminus of human Nucleophosmin, identical to the related rat and mouse sequences.	
Concentration	500 ug/ml	
Purification	Immunogen affinity purified.	
Observed MW	38-40 kDa	
Dilution Ratios	Western blot (WB): 1:500-2000 Immunohistochemistry (IHC): 1:50-400 Immunocytochemistry/Immunofluorescence (ICC/IF): 1:50-400 (Boiling the paraffin sections in 10mM citrate buffer, pH6.0, or PH8.0 EDTA repair liquid for 20 mins is required for the staining of formalin/paraffin sections.) Optimal working dilutions must be determined by end user.	

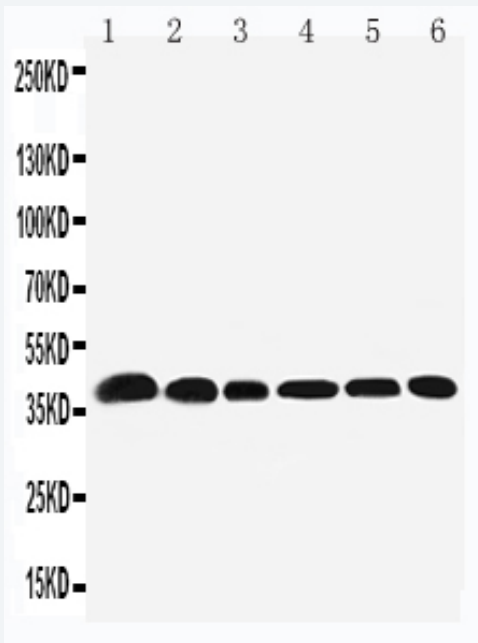
Storage

12 months from date of receipt, -20°C as supplied. 6 months 2 to 8°C after reconstitution. Avoid repeated freezing and thawing.

Background Information

NPM1 (Nucleophosmin/Nucleoplasmin family, member1), also known as NPM, nucleolar phosphoprotein B23 or numatrin, is a protein that in humans is encoded by the NPM1 gene. The NPM1 gene maps to chromosome 5q35. Chan et al. (1989) found that nucleophosmin is a nucleolar phosphoprotein that is more abundant in tumor cells than in normal resting cells. Stimulation of the growth of normal cells, e.g., mitogen activation of B lymphocytes, was accompanied by an increase in nucleophosmin protein level. They stated that nucleophosmin is likely involved in the assembly of ribosomal proteins into ribosomes. Electron microscopic study indicated that nucleophosmin is concentrated in the granular region of the nucleolus, where ribosome assembly occurs.

Selected Validation Data



Lane 1: Rat Testis Tissue Lysate

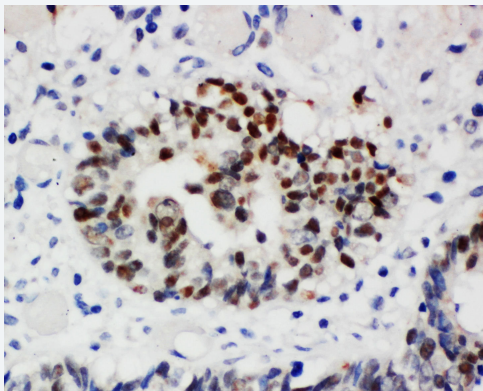
Lane 2: Rat Brain Tissue Lysate

Lane 3: HELA Cell Lysate

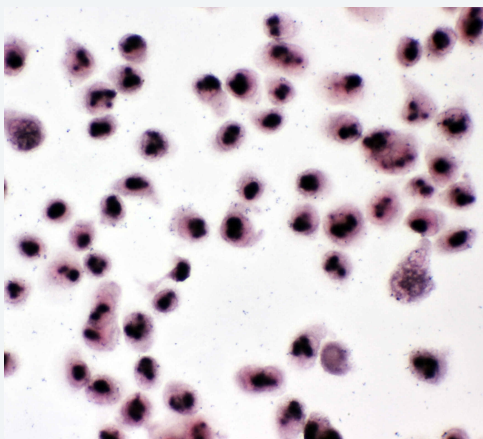
Lane 4: U87 Cell Lysate

Lane 5: A549 Cell Lysate

Lane 6: SMMC Cell Lysate



ICH(P): Human Intestinal Cancer Tissue



ICC: HELA Cell

Product datasheet

Anti-B23/NPM1 Antibody

Catalog Number: **BA3863**

BOSTER

antibody and ELISA experts

BOSTER BIOLOGICAL TECHNOLOGY

Building C21, 3rd and 4th floors, Optics Valley Biomedical Accelerator,
Wuhan East Lake High-tech Development Zone

Web: www.boster.com **Phone:** 027-67845390 **Email:** boster@boster.com