

## Basic Information

<b>Product Name</b>	Anti-IL6 Antibody	
<b>Gene Name</b>	IL6	
<b>Source</b>	Rabbit	
<b>Clonality</b>	Polyclonal	
<b>Isotype</b>	IgG	
<b>Species Reactivity</b>	mouse, rat	
<b>Tested Application</b>	WB, IHC	
<b>Contents</b>	500 ug/ml antibody with PBS, 0.02% NaN <sub>3</sub> , 1 mg/ml BSA and 50% glycerol.	
<b>Immunogen</b>	A synthetic peptide corresponding to a sequence at the C-terminus of rat IL6, different from the related mouse sequence by two amino acids.	
<b>Concentration</b>	500 ug/ml	
<b>Purification</b>	Immunogen affinity purified.	
<b>Observed MW</b>	30 kDa	
<b>Dilution Ratios</b>	Western blot (WB): 1:500-2000 Immunohistochemistry (IHC): 1:50-400 (Boiling the paraffin sections in 10mM citrate buffer,pH6.0,or PH8.0 EDTA repair liquid for 20 mins is required for the staining of formalin/paraffin sections.) Optimal working dilutions must be determined by end user.	

## Storage

12 months from date of receipt, -20°C as supplied. 6 months 2 to 8°C after reconstitution. Avoid repeated freezing and thawing.

## Background Information

Interleukin-6(IL-6) is a protein that in humans is encoded by the IL6 gene. IL-6 is an interleukin that acts as both a pro-inflammatory and anti-inflammatory cytokine. It is secreted by T cells and macrophages to stimulate immune response to trauma, especially burns or other tissue damage leading to inflammation. IL-6 is one of the most important mediators of fever and of the acute phase response. IL-6 is also essential for hybridoma growth and is found in many supplemental cloning media such as briclone. Bowcock et al.(1988) assigned the IL6 gene to chromosome 7p21. By in situ hybridization and Southern blot analysis of mouse-human hybrid cell lines, Sutherland et al.(1988) mapped the IL6 gene to chromosome 7p15.

## Reference

Anti-IL6 Antibody被引用在72文献中。

## Selected Validation Data

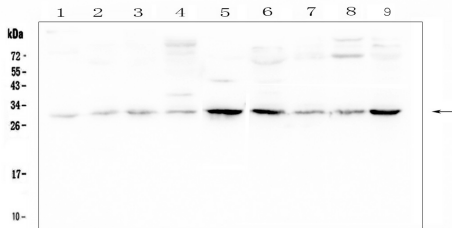


Figure 1. Western blot analysis of IL6 using anti-IL6 antibody (BA4339). The sample well of each lane was loaded with 30 ug of sample under reducing conditions.

Lane 1: mouse smooth muscle tissue lysates,

Lane 2: mouse heart tissue lysates,

Lane 3: mouse lung tissue lysates,

Lane 4: mouse brain tissue lysates,

Lane 5: mouse small intestine tissue lysates,

Lane 6: mouse Hepa1/6 whole cell lysates,

Lane 7: mouse NIH/3T3 whole cell lysates,

Lane 8: mouse SP/20 whole cell lysates,

Lane 9: mouse RAW264.7 whole cell lysates.

After electrophoresis, proteins were transferred to a membrane. Then the membrane was incubated with rabbit anti-IL6 antigen affinity purified polyclonal antibody (BA4339) at a dilution of 1:1000 and probed with a goat anti-rabbit IgG-HRP secondary antibody (Catalog # BA1054). The signal is developed using ECL Plus Western Blotting Substrate (Catalog # AR1197). A specific band was detected for IL6 at approximately 30 kDa. The expected band size for IL6 is at 24 kDa.

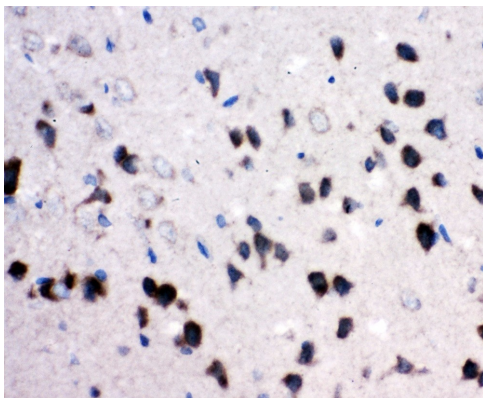


Figure 3. IHC analysis of IL6 using anti-IL6 antibody (BA4339) .

IL6 was detected in a paraffin-embedded section of rat brain tissue.

The tissue section was incubated with rabbit anti-IL6 Antibody

(BA4339) at a dilution of 1:200 and developed using HRP

Conjugated Rabbit IgG Super Vision Assay Kit (Catalog # SV0002)

with DAB (Catalog # AR1022) as the chromogen.