

Basic Information

Product Name	Anti-Pan Cytokeratin Antibody (Clone#C-11+PCK-26+CY-90+KS-1A3+M20+A53-B/A2)	
Gene Name	KRT1	
Source	Mouse	
Clonality	Monoclonal	
Isotype	IgG2a/ IgG1	
Species Reactivity	human, rat	
Tested Application	WB, IHC	
Contents	200ug/ml antibody with PBS , 0.02% NaN ₃ , 1mg BSA and 50% glycerol.	
Immunogen	mixture of several monoclonal cytokeratin clones.	
Concentration	200ug/ml	
Purification	Ascites	
Observed MW	66 kDa	
Dilution Ratios	Western blot (WB): 1:500-2000 Immunohistochemistry (IHC): 1:50-400 (Boiling the paraffin sections in 10mM citrate buffer,pH6.0,or PH8.0 EDTA repair liquid for 20 mins is required for the staining of formalin/paraffin sections.) Optimal working dilutions must be determined by end user.	

Storage

12 months from date of receipt, -20°C as supplied. 6 months 2 to 8°C after reconstitution. Avoid repeated freezing and thawing.

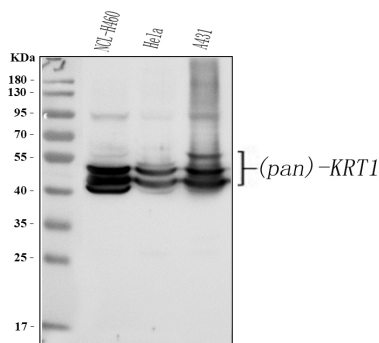
Background Information

Monoclonal anti cytokeratins are specific markers of epithelial cell differentiation and have been widely used as tools in tumor identification and classification. Monoclonal Anti Pan Cytokeratin(mixture) is a broadly reactive reagent, which recognizes epitopes present in most human epithelial tissues.

Reference

Anti-Pan Cytokeratin Antibody (Clone#C-11+PCK-26+CY-90+KS-1A3+M20+A53-B/A2)被引用在9文献中。

Selected Validation Data



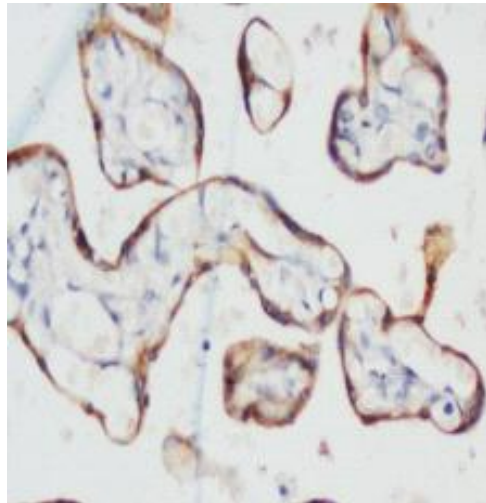
Western blot analysis of anti-Pan KRT1 antibody (BM0034). The sample well of each lane was loaded with 30 ug of sample under reducing conditions.

Lane 1: human NCL-H460 whole cell lysates,

Lane 2: human HeLa whole cell lysates,

Lane 3: human A431 whole cell lysates.

After electrophoresis, proteins were transferred to a membrane. Then the membrane was incubated with rabbit anti-Pan KRT1 antigen affinity purified monoclonal antibody (BM0034) and probed with a goat anti-rabbit IgG-HRP secondary antibody (Catalog # BA1054). The signal is developed using ECL Plus Western Blotting Substrate (Catalog # AR1197). A specific band was detected for Pan KRT1 at approximately 45-60 kDa. The expected band size for Pan KRT1 is at 66 kDa.



IHC analysis of Pan KRT1 using anti-Pan KRT1 antibody (BM0034). Pan KRT1 was detected in a paraffin-embedded section of human placenta tissue. The tissue section was developed using HRP Conjugated rabbit IgG Super Vision Assay Kit (Catalog # SV0002) with DAB (Catalog # AR1027) as the chromogen.