

## Basic Information

<b>Product Name</b>	Anti-S100 Beta/S100B Antibody (Clone#SH-B1)		
<b>Gene Name</b>	S100B		
<b>Source</b>	Mouse		
<b>Clonality</b>	Monoclonal		
<b>Isotype</b>	IgG1		
<b>Species Reactivity</b>	human, rat, rabbit		
<b>Tested Application</b>	IHC		
<b>Contents</b>	200ug/ml antibody with PBS , 0.02% NaN <sub>3</sub> , 1mg BSA		
<b>Immunogen</b>	Bovine brain S-100b.		
<b>Concentration</b>	200ug/ml		
<b>Purification</b>	Ascites		
<b>Dilution Ratios</b>	Immunohistochemistry (IHC): 1:50-400 (Boiling the paraffin sections in 10mM citrate buffer,pH6.0,or PH8.0 EDTA repair liquid for 20 mins is required for the staining of formalin/paraffin sections.) Optimal working dilutions must be determined by end user.		

## Storage

12 months from date of receipt, -20°C as supplied.

## Background Information

S100 protein is a 21,000-Da component first isolated from brain by Moore(1965). Immunocytochemical studies demonstrated that S100 protein is produced by a wide variety of normal and neoplastic cells of mesodermal, neuroectodermal, and epithelial origin(Herrera et al., 1988). The S100 molecule is a dimer; thus there are 3 forms of S100: alpha-alpha, known as S-100a(0); alpha-beta, known as S-100a; and beta-beta, known as S-100b. S100 genes are clustered on human chromosome 1q21. S-100 protein expression by primary and metastatic adenocarcinomas.

## Reference

Anti-S100 Beta/S100B Antibody (Clone#SH-B1)被引用在42文献中。

Product datasheet

**Anti-S100 Beta/S100B Antibody  
(Clone#SH-B1)**

**Catalog Number: BM0120**

**BOSTER**<sup>®</sup>

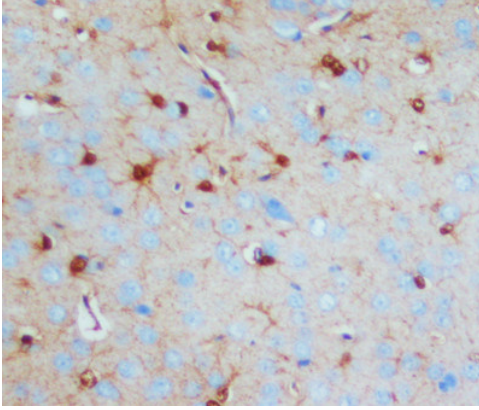
antibody and ELISA experts

**BOSTER BIOLOGICAL TECHNOLOGY**

Building C21, 3rd to 5th Floors, Optics Valley Biopharmaceutical Accelerator,  
East Lake High-Tech Development Zone, Wuhan.

**Web:** [www.boster.com](http://www.boster.com) **Phone:** 027-67845390/1/2 **Email:** [boster@boster.com](mailto:boster@boster.com)

## Selected Validation Data



IHC(P): Rat Brain Tissue Lysate