

## Basic Information

<b>Product Name</b>	Anti-BrdU Antibody
<b>Source</b>	Mouse
<b>Clonality</b>	Monoclonal
<b>Isotype</b>	IgG
<b>Species Reactivity</b>	human, mouse, rat, rabbit
<b>Tested Application</b>	IHC
<b>Contents</b>	200ug/ml antibody with PBS , 0.02% NaN <sub>3</sub> , 1mg BSA and 50% glycerol.
<b>Immunogen</b>	Polypeptide
<b>Purification</b>	Immunogen affinity purified.
<b>Dilution Ratios</b>	Western blot (WB): 1:500-2000 Immunohistochemistry (IHC): 1:50-400 Immunocytochemistry in fixed cells (ICC): 1:50-400 Immunohistochemistry in frozen section (IHC-F): 1:50-400 (Boiling the paraffin sections in 10mM citrate buffer, pH6.0, or PH8.0 EDTA repair liquid for 20 mins is required for the staining of formalin/paraffin sections.) Optimal working dilutions must be determined by end user.

## Storage

12 months from date of receipt, -20°C as supplied. 6 months 2 to 8°C after reconstitution. Avoid repeated freezing and thawing.

## Reference

Anti-BrdU Antibody被引用在68文献中。

## Selected Validation Data

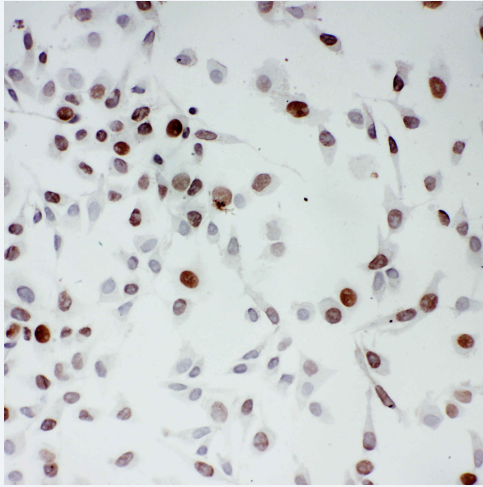


Figure 1. IHC analysis using anti-BrdU antibody (BM0201) detected in paraffin-embedded section of HELA cells. Biotinylated goat anti-mouse IgG was used as secondary antibody. The tissue section was developed using Streptavidin-Biotin-Complex (SABC) (Catalog # SA1022) with DAB as the chromogen.