

Basic Information

Product Name	Anti-Laminin Antibody (Clone#LAM-89)	
Gene Name	LAMA1/LAMB1	
Source	Mouse	
Clonality	Monoclonal	
Isotype	IgG1	
Species Reactivity	human, feline, pig	
Tested Application	IHC	
Contents	200ug/ml antibody with PBS , 0.02% NaN ₃ , 1mg BSA and 50% glycerol.	
Immunogen	Human laminin.	
Concentration	200ug/ml	
Purification	Ascites	
Dilution Ratios	Immunohistochemistry (IHC): 1:50-400 (Boiling the paraffin sections in 10mM citrate buffer,pH6.0,or PH8.0 EDTA repair liquid for 20 mins is required for the staining of formalin/paraffin sections.) Optimal working dilutions must be determined by end user.	

Storage

12 months from date of receipt, -20℃ as supplied.

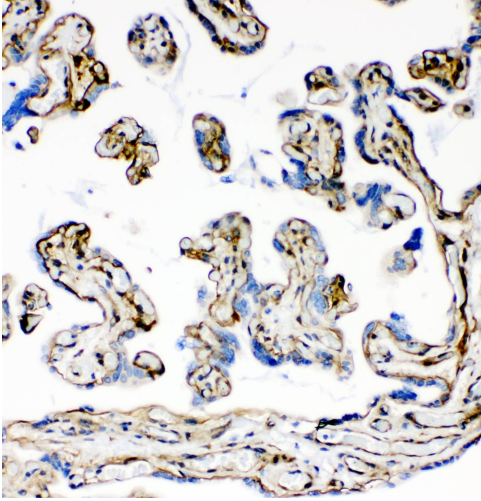
Background Information

Laminin is a heterotrimeric extracellular matrix protein consisting of 3 chains: alpha-1,beta-1 and gamma-1, formerly called beta-2(LAMA2). This gene is over 260,000 base pairs and contains 64 exons. Laminin is similar with merosin, a basement membrane-associated protein found in placenta, striated muscle, and peripheral nerve, and both of them are members of the same family of basement membrane proteins. And merosin is the same as laminin M, a striated muscle-specific, basal-lamina-associated protein, it may play a primary role in the pathogenesis of that disorder.

Reference

Anti-Laminin Antibody (Clone#LAM-89)被引用在5文献中。

Selected Validation Data



IHC analysis of Laminin using anti-Laminin antibody (BM1225).

Laminin was detected in a paraffin-embedded section of human placenta tissue. The tissue section was incubated with mouse anti-Laminin Antibody (BM1225) at a dilution of 1:200 and developed using HRP Conjugated mouse IgG Super Vision Assay Kit (Catalog # SV0001) with DAB (Catalog # AR1027) as the chromogen.