

Basic Information

Product Name	Anti-CDC6 Antibody (Clone#DCS-180)
Gene Name	CDC6
Source	Mouse
Clonality	Monoclonal
Isotype	IgG1
Species Reactivity	human
Tested Application	WB
Contents	200ug/ml antibody with PBS , 0.02% NaN ₃ , 1mg BSA and 50% glycerol.
Immunogen	Recombinant human Cdc6.
Concentration	200ug/ml
Purification	Ascites
Observed MW	63 kDa
Dilution Ratios	Western blot (WB):1:500-2000

Storage

12 months from date of receipt, -20°C as supplied.

Background Information

In yeasts, Cdc6(*Saccharomyces cerevisiae*) and Cdc18(*Schizosaccharomyces pombe*) associate with the origin recognition complex(ORC) proteins to render cells competent for DNA replication. Cdc6 is overexpressed in human cancers, where it has a critical regulatory role in addition to DNA replication. Yan et al.(1998) showed that Cdc6 is expressed selectively in proliferating but not quiescent mammalian cells, both in culture and within tissues in intact animals. During the transition from a growth-arrested to a proliferative state, transcription of mammalian Cdc6 is regulated by E2F proteins, as revealed by a functional analysis of the human Cdc6 promoter and by the ability of exogenously expressed E2F proteins to stimulate the endogenous Cdc6 gene. They conclude that expression of human Cdc6 is regulated in response to mitogenic signals through transcriptional control mechanisms involving E2F proteins, and that Cdc6 is required for initiation of DNA replication in mammalian cells.

Selected Validation Data

Product datasheet

Anti-CDC6 Antibody (Clone#DCS-180)

Catalog Number: **BM1579**

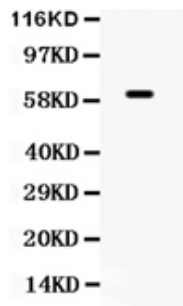


antibody and ELISA experts

BOSTER BIOLOGICAL TECHNOLOGY

Building C21, 3rd to 5th Floors, Optics Valley Biopharmaceutical Accelerator,
East Lake High-Tech Development Zone, Wuhan.

Web: www.boster.com **Phone:** 027-67845390/1/2 **Email:** boster@boster.com



CDC6(BM1579)(MW:63KD)Jurkat细胞裂解, 免疫印迹分析.