

## Basic Information

Product Name	Anti-Beta Actin/ACTB Antibody		
Gene Name	ACTB		
Source	Rabbit		
Clonality	Monoclonal		
Isotype	IgG		
Species Reactivity	human, mouse, rat, monkey, zebrafish		
Tested Application	WB, IHC, ICC/IF		
Contents	500 ug/ml; Rabbit IgG in phosphate buffered saline, pH 7.4, 150mM NaCl, 0.02% sodium azide, 0.4-0.5 mg/ml BSA and 50% glycerol.		
Immunogen	A synthesized peptide derived from human beta Actin		
Purification	Immunogen affinity purified.		
Observed MW	42 kDa		
Dilution Ratios	Western blot (WB):	1:2000-20000	
	Immunohistochemistry (IHC):	1:50-200	
	Immunocytochemistry/Immunofluorescence (ICC/IF):	1:50-200	

## Storage

12 months from date of receipt, -20°C as supplied. 6 months 2 to 8°C after reconstitution. Avoid repeated freezing and thawing.

## Background Information

The primary site of action of cytochalasin B on cell motility processes is beta-actin. Habets et al.(1992) generated hybrids that harbor only specific regions of human chromosome 7 and assigned the ACTB locus to 7p15-p12. ACTB and the other assigned beta-actin-related sequences are dispersed over at least four different chromosomes including one locus assigned to the X chromosome. A mutation of beta-actin that alters depolymerization dynamics is associated with autosomal dominant developmental malformations, deafness, and dystonia.

## Reference

Anti-Beta Actin/ACTB Antibody被引用在200文献中。

## Selected Validation Data

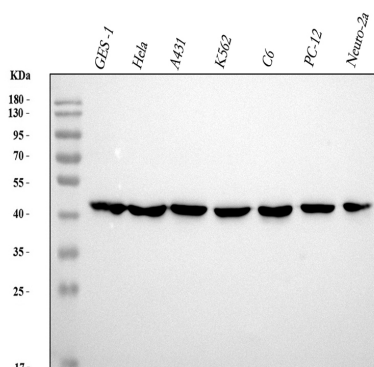


Figure 1. Western blot analysis of anti-Beta Actin/ACTB antibody (BM3873). The sample well of each lane was loaded with 30 ug of sample under reducing conditions.

Lane 1: human GES-1 whole cell lysates,

Lane 2: human Hela whole cell lysates,

Lane 3: human A431 whole cell lysates,

Lane 4: human K562 whole cell lysates,

Lane 5: rat C6 whole cell lysates,

Lane 6: mouse PC-12 whole cell lysates,

Lane 7: mouse Neuro-2a whole cell lysates.

After electrophoresis, proteins were transferred to a membrane.

Then the membrane was incubated with rabbit anti-Beta Actin/ACTB antigen affinity purified monoclonal antibody (BM3873) at a dilution of 1:1000 and probed with a goat anti-rabbit IgG-HRP secondary antibody (Catalog # BA1054). The signal is developed using ECL Plus Western Blotting Substrate (Catalog # AR1197). A specific band was detected for Beta Actin/ACTB at approximately 42 kDa. The expected band size for Beta Actin/ACTB is at 42 kDa.