

## Basic Information

<b>Product Name</b>	Anti-GFP Antibody (Clone#CE-7)	
<b>Gene Name</b>	GFP	
<b>Source</b>	Rabbit	
<b>Clonality</b>	Monoclonal	
<b>Isotype</b>	IgG	
<b>Species Reactivity</b>	human, mouse, rat	
<b>Tested Application</b>	WB, IHC, ICC/IF	
<b>Contents</b>	500 ug/ml; Rabbit IgG in phosphate buffered saline, pH 7.4, 150mM NaCl, 0.02% sodium azide, 0.4-0.5 mg/ml BSA and 50% glycerol.	
<b>Immunogen</b>	A synthesized peptide derived from green fluorescent protein	
<b>Concentration</b>	500 ug/ml	
<b>Purification</b>	Affinity-chromatography	
<b>Observed MW</b>	27 kDa	
<b>Dilution Ratios</b>	Western blot (WB):	1:1000-5000
	Immunohistochemistry (IHC):	1:50-200
	Immunocytochemistry/Immunofluorescence (ICC/IF):	1:50-200

## Storage

12 months from date of receipt, -20°C as supplied. 6 months 2 to 8°C after reconstitution. Avoid repeated freezing and thawing.

## Background Information

Green fluorescent protein(GFP) has been engineered to produce a vast number of variously colored mutants, fusion proteins, and biosensors. Fluorescent proteins and its mutated allelic forms, blue, cyan and yellow have become a useful and ubiquitous tool for making chimeric proteins, where they function as a fluorescent protein tag. Typically they tolerate N- and C-terminal fusion to a broad variety of proteins.

## Reference

Anti-GFP Antibody (Clone#CE-7)被引用在9文献中。

Product datasheet

## Anti-GFP Antibody (Clone#CE-7)

Catalog Number: **BM3883**

# BOSTER

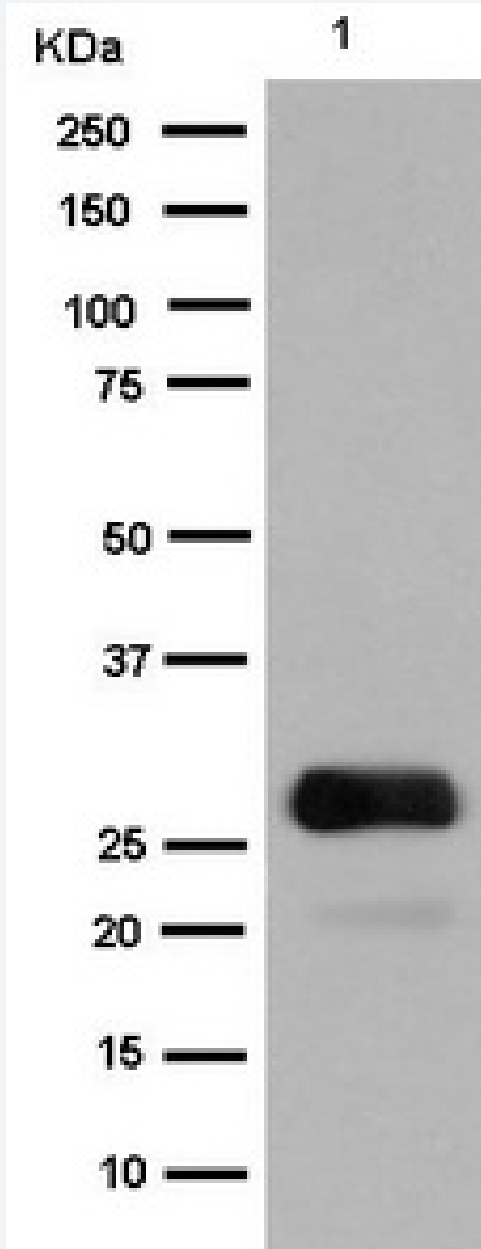
antibody and ELISA experts

**BOSTER BIOLOGICAL TECHNOLOGY**

Building C21, 3rd and 4th floors, Optics Valley Biomedical Accelerator,  
Wuhan East Lake High-tech Development Zone

Web: [www.boster.com](http://www.boster.com) Phone: 027-67845390 Email: [boster@boster.com](mailto:boster@boster.com)

## Selected Validation Data



Western blot analysis of GFP expression in 293 cell lysate transfected with GFP.