

## Basic Information

<b>Product Name</b>	Anti-Alpha Tubulin/TUBA1B Antibody	
<b>Gene Name</b>	TUBA1B	
<b>Source</b>	Rabbit	
<b>Clonality</b>	Monoclonal	
<b>Isotype</b>	IgG	
<b>Species Reactivity</b>	human, mouse, rat	
<b>Tested Application</b>	WB, IHC, ICC/IF, IP, FCM	
<b>Contents</b>	500 ug/ml; Rabbit IgG in phosphate buffered saline, pH 7.4, 150mM NaCl, 0.02% sodium azide, 0.4-0.5 mg/ml BSA and 50% glycerol.	
<b>Immunogen</b>	A synthesized peptide derived from human alpha Tubulin	
<b>Purification</b>	Affinity-chromatography	
<b>Observed MW</b>	55 kDa	
<b>Dilution Ratios</b>	Western blot (WB):	1:1000-5000
	Immunohistochemistry (IHC):	1:50-200
	Immunocytochemistry/Immunofluorescence (ICC/IF):	1:50-200
	ImmunoPrecipitation (IP):	1:20
	Flow Cytometry (FCM):	1:20

## Storage

12 months from date of receipt, -20°C as supplied. 6 months 2 to 8°C after reconstitution. Avoid repeated freezing and thawing.

## Background Information

Alpha-tubulin( $\beta$ -alpha-1) mRNA is expressed only in brain with a molecular weight of about 55,000. The 3-prime UTR of  $\beta$ -alpha-1 is more than 80% homologous to the UTR of the rat brain alpha-tubulin gene, IL-alpha-T1. B-alpha-1 encodes a predicted 451-amino acid protein that is 100% identical to the rat homolog and differs by only 2 and 3 amino acids from the pig and chicken homologs, respectively.

## Reference

Anti-Alpha Tubulin/TUBA1B Antibody被引用在2文献中。

Product datasheet

## Anti-Alpha Tubulin/TUBA1B Antibody

Catalog Number: **BM3885**

# BOSTER

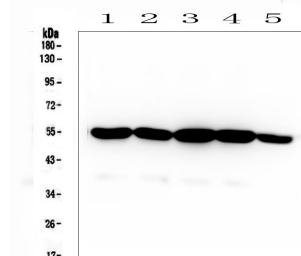
antibody and ELISA experts

**BOSTER BIOLOGICAL TECHNOLOGY**

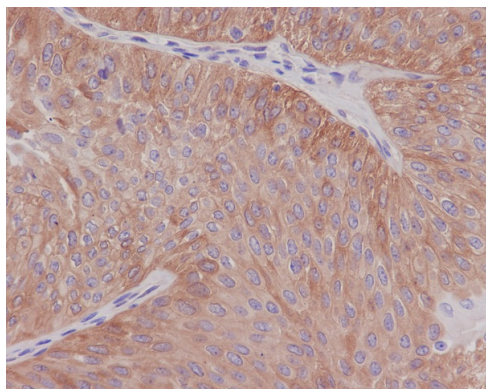
Building C21, 3rd and 4th floors, Optics Valley Biomedical Accelerator,  
Wuhan East Lake High-tech Development Zone

**Web:** www.boster.com **Phone:** 027-67845390 **Email:** boster@boster.com

## Selected Validation Data



alpha Tubulin(BM3885)(MW:55KD)大鼠脑, 大鼠脑, 小鼠脑, 小鼠脑组织, 人Hela细胞裂解, 免疫印迹分析。



Immunohistochemical analysis of paraffin-embedded human bladder, using alpha Tubulin Antibody.