

## Basic Information

<b>Product Name</b>	Anti-beta III Tubulin/TUBB3 Antibody
<b>Gene Name</b>	TUBB3
<b>Source</b>	Rabbit
<b>Clonality</b>	Monoclonal
<b>Isotype</b>	IgG
<b>Species Reactivity</b>	human, mouse, rat
<b>Tested Application</b>	WB
<b>Contents</b>	500 ug/ml; Rabbit IgG in phosphate buffered saline, pH 7.4, 150mM NaCl, 0.02% sodium azide, 0.4-0.5 mg/ml BSA and 50% glycerol.
<b>Immunogen</b>	A synthesized peptide derived from human beta Tubulin
<b>Purification</b>	Affinity-chromatography
<b>Observed MW</b>	50 kDa
<b>Dilution Ratios</b>	Western blot (WB):1:1000-5000

## Storage

12 months from date of receipt, -20°C as supplied. 6 months 2 to 8°C after reconstitution. Avoid repeated freezing and thawing.

## Reference

Anti-beta III Tubulin/TUBB3 Antibody被引用在2文献中。

## Selected Validation Data

Product datasheet

## Anti-beta III Tubulin/TUBB3 Antibody

Catalog Number: **BM3897**

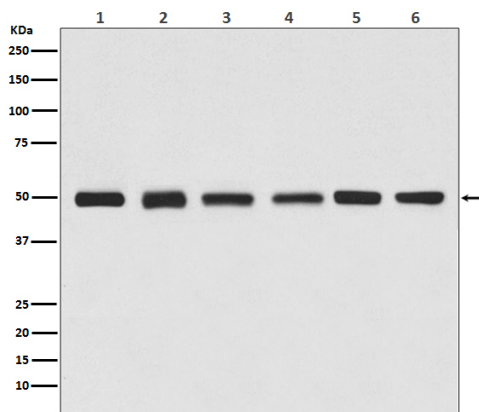
# BOSTER

antibody and ELISA experts

**BOSTER BIOLOGICAL TECHNOLOGY**

Building C21, 3rd and 4th floors, Optics Valley Biomedical Accelerator,  
Wuhan East Lake High-tech Development Zone

**Web:** [www.boster.com](http://www.boster.com) **Phone:** 027-67845390 **Email:** [boster@boster.com](mailto:boster@boster.com)



Western blot analysis of beta Tubulin expression in (1) Jurkat cell lysate, (2) Human kidney lysate, (3) 3T3 cell lysate, (4) Mouse brain lysate, (5) C6 cell lysate, (6) Rat heart lysate.