

## Basic Information

<b>Product Name</b>	Anti-a-SMA/ACTA2 Antibody	
<b>Gene Name</b>	ACTA2	
<b>Source</b>	Rabbit	
<b>Clonality</b>	Monoclonal	
<b>Isotype</b>	IgG	
<b>Species Reactivity</b>	human, mouse, rat	
<b>Tested Application</b>	WB, IHC, ICC/IF, FCM	
<b>Contents</b>	500 ug/ml; Rabbit IgG in phosphate buffered saline, pH 7.4, 150mM NaCl, 0.02% sodium azide, 0.4-0.5 mg/ml BSA and 50% glycerol.	
<b>Immunogen</b>	A synthesized peptide derived from human alpha smooth muscle Actin	
<b>Concentration</b>	500ug/ml	
<b>Purification</b>	Affinity-chromatography	
<b>Observed MW</b>	42 kDa	
<b>Dilution Ratios</b>	Western blot (WB):	1:1000-5000
	Immunohistochemistry (IHC):	1:50-200
	Immunocytochemistry/Immunofluorescence (ICC/IF):	1:50-200
	Flow Cytometry (FCM):	1:20

## Storage

12 months from date of receipt, -20°C as supplied. 6 months 2 to 8°C after reconstitution. Avoid repeated freezing and thawing.

## Reference

Anti-a-SMA/ACTA2 Antibody被引用在91文献中。

## Selected Validation Data

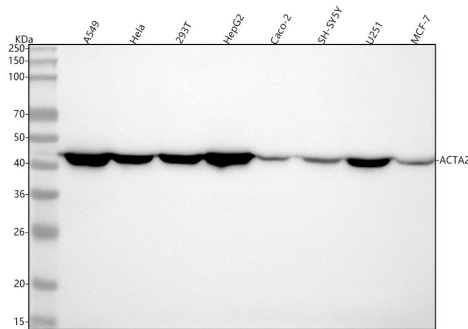
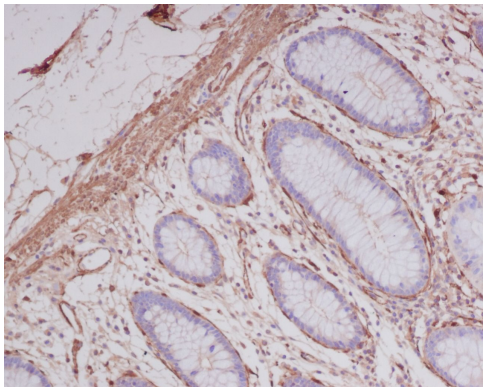


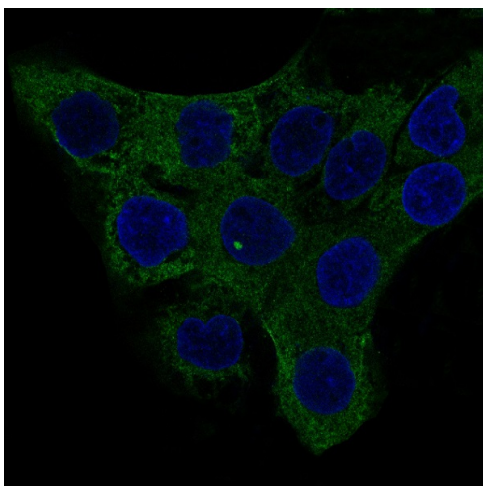
Figure 1. Western blot analysis of anti-a-SMA/ACTA2 antibody (BM3902). The sample well of each lane was loaded with 30 ug of sample under reducing conditions.

Lane 1: human A549 whole cell lysates,  
Lane 2: human Hela whole cell lysates,  
Lane 3: human 293T whole cell lysates,  
Lane 4: human HepG2 whole cell lysates,  
Lane 5: human Caco-2 whole cell lysates,  
Lane 6: human SH-SY5Y whole cell lysates,  
Lane 7: human U251 whole cell lysates,  
Lane 8: human MCF-7 whole cell lysates.

After electrophoresis, proteins were transferred to a membrane. Then the membrane was incubated with rabbit anti-a-SMA/ACTA2 antigen affinity purified monoclonal antibody (BM3902) at a dilution of 1:1000 and probed with a goat anti-rabbit IgG-HRP secondary antibody (Catalog # BA1054). The signal is developed using ECL Plus Western Blotting Substrate (Catalog # AR1197). A specific band was detected for a-SMA/ACTA2 at approximately 42 kDa. The expected band size for a-SMA/ACTA2 is at 42 kDa.



Immunohistochemical analysis of paraffin-embedded human colon, using alpha smooth muscle Actin Antibody.



Immunofluorescent analysis of A431 cells, using alpha smooth muscle Actin Antibody .

Product datasheet

## Anti-a-SMA/ACTA2 Antibody

Catalog Number: **BM3902**

# BOSTER

antibody and ELISA experts

**BOSTER BIOLOGICAL TECHNOLOGY**

Building C21, 3rd and 4th floors, Optics Valley Biomedical Accelerator,  
Wuhan East Lake High-tech Development Zone

**Web:** [www.boster.com](http://www.boster.com) **Phone:** 027-67845390 **Email:** [boster@boster.com](mailto:boster@boster.com)