

Basic Information

Product Name	Anti-EIF2A/EIF2S1 (Phospho-S51) Antibody (Clone#IO-5)	
Gene Name	EIF2S1	
Source	Rabbit	
Clonality	Monoclonal	
Isotype	IgG	
Species Reactivity	human, mouse, rat	
Tested Application	WB, IHC, ICC/IF, FCM	
Contents	500 ug/ml; Rabbit IgG in phosphate buffered saline, pH 7.4, 150mM NaCl, 0.02% sodium azide, 0.4-0.5 mg/ml BSA and 50% glycerol.	
Immunogen	A synthesized peptide derived from human Phospho-EIF2S1 (S51)	
Concentration	500 ug/ml	
Purification	Affinity-chromatography	
Observed MW	36 kDa	
Dilution Ratios	Western blot (WB):	1:500-2000
	Immunohistochemistry (IHC):	1:50-200
	Immunocytochemistry/Immunofluorescence (ICC/IF):	1:50-200
	Flow Cytometry (FCM):	1:40

Storage

12 months from date of receipt, -20°C as supplied. 6 months 2 to 8°C after reconstitution. Avoid repeated freezing and thawing.

Background Information

EIF2S1(Eukaryotic Translation Initiation Factor 2, Subunit 1), also called EIF2-alpha, is a protein that in humans is encoded by the EIF2S1 gene. Hartz(2010) mapped the EIF2S1 gene to chromosome 14q23.3 based on an alignment of the EIF2S1 sequence with the genomic sequence(GRCh37). Ernst et al.(1987) stated that protein synthesis is inhibited due to phosphorylation of Eif2-alpha in hemin-deprived rabbit reticulocyte lysates. HeLa cells subjected to heat shock, serum deprivation, or interferon treatment followed by virus infection also show a correlation between EIF2-alpha phosphorylation and translational repression. Jacob et al.(1989) found that the alpha-Pal transcription factor bound to 2 palindromic sites within the EIF2-alpha promoter and was essential for transcription of the EIF2-alpha gene.

Reference

Anti-EIF2A/EIF2S1 (Phospho-S51) Antibody (Clone#IO-5)被引用在1文献中。

Selected Validation Data

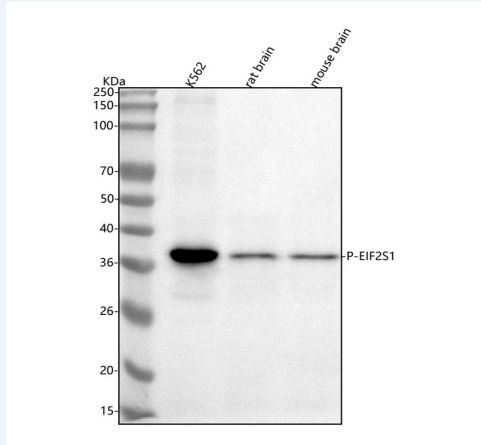


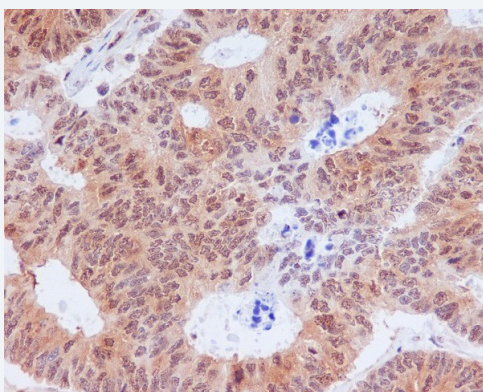
Figure 1. Western blot analysis of anti-EIF2A/EIF2S1 antibody (BM3942). The sample well of each lane was loaded with 30 ug of sample under reducing conditions.

Lane 1: human K562 whole cell lysates,

Lane 2: rat brain tissue lysates,

Lane 3: mouse brain tissue lysates.

After electrophoresis, proteins were transferred to a membrane. Then the membrane was incubated with rabbit anti-EIF2A/EIF2S1 antigen affinity purified monoclonal antibody (BM3942) at a dilution of 1:1000 and probed with a goat anti-rabbit IgG-HRP secondary antibody (Catalog # BA1054). The signal is developed using ECL Plus Western Blotting Substrate (Catalog # AR1197). A specific band was detected for EIF2A/EIF2S1 at approximately 36 kDa. The expected band size for EIF2A/EIF2S1 is at 36 kDa.



Immunohistochemical analysis of paraffin-embedded human colon cancer, using Phospho-eIF2 alpha (Ser51) Antibody.

Product datasheet

Anti-EIF2A/EIF2S1 (Phospho-S51)

Antibody (Clone#IO-5)

Catalog Number: **BM3942**

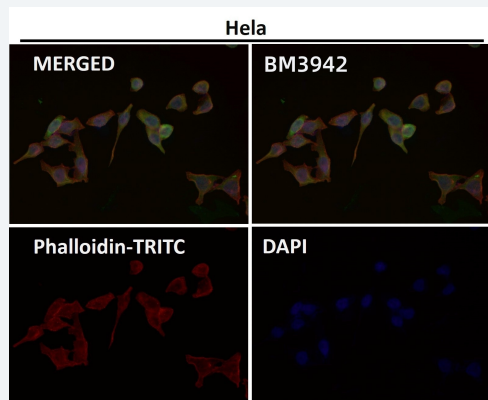
BOSTER

antibody and ELISA experts

BOSTER BIOLOGICAL TECHNOLOGY

Building C21, 3rd and 4th floors, Optics Valley Biomedical Accelerator,
Wuhan East Lake High-tech Development Zone

Web: www.boster.com **Phone:** 027-67845390 **Email:** boster@boster.com



Immunofluorescent analysis using the Antibody.