

## Basic Information

<b>Product Name</b>	Anti-CCR2 Antibody (Clone#AOF-3)		
<b>Gene Name</b>	CCR2		
<b>Source</b>	Rabbit		
<b>Clonality</b>	Monoclonal		
<b>Isotype</b>	IgG		
<b>Species Reactivity</b>	human, mouse		
<b>Tested Application</b>	WB, IHC, ICC/IF, IP, FCM		
<b>Contents</b>	500 ug/ml; Rabbit IgG in phosphate buffered saline, pH 7.4, 150mM NaCl, 0.02% sodium azide, 0.4-0.5 mg/ml BSA and 50% glycerol.		
<b>Immunogen</b>	A synthesized peptide derived from human CCR2/CKR2		
<b>Concentration</b>	500 ug/ml		
<b>Observed MW</b>	50 kDa		
<b>Dilution Ratios</b>	Western blot (WB):	1:500-2000	
	Immunohistochemistry (IHC):	1:50-200	
	Immunocytochemistry/Immunofluorescence (ICC/IF):	1:50-200	
	ImmunoPrecipitation (IP):	1:50	
	Flow Cytometry (FCM):	1:100	

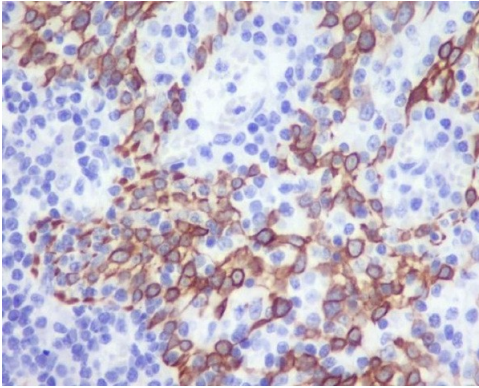
## Storage

12 months from date of receipt, -20°C as supplied.

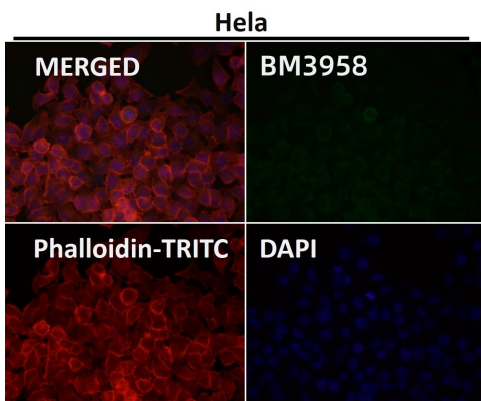
## Background Information

Receptor for the MCP-1, MCP-3 and MCP-4 chemokines. Transduces a signal by increasing the intracellular calcium ions level. Alternative coreceptor with CD4 for HIV-1 infection.

## Selected Validation Data



Immunohistochemical analysis of paraffin-embedded human tonsil, using CCR2/CKR2 Antibody.



Immunofluorescent analysis using the Antibody.