

Basic Information

Product Name	Anti-VEGF/VEGFA Antibody (Clone#ADB-22)	
Gene Name	VEGFA	
Source	Rabbit	
Clonality	Monoclonal	
Isotype	IgG	
Species Reactivity	human, mouse	
Tested Application	IHC, ICC/IF, FCM	
Contents	500 ug/ml; Rabbit IgG in phosphate buffered saline, pH 7.4, 150mM NaCl, 0.02% sodium azide, 0.4-0.5 mg/ml BSA and 50% glycerol.	
Immunogen	A synthesized peptide derived from human VEGF	
Concentration	500 ug/ml	
Purification	Affinity-chromatography	
Observed MW	28KD	
Dilution Ratios	Immunohistochemistry (IHC):	1:50-200
	Immunocytochemistry/Immunofluorescence (ICC/IF):	1:50-200
	Flow Cytometry (FCM):	1:50

Storage

12 months from date of receipt, -20°C as supplied. 6 months 2 to 8°C after reconstitution. Avoid repeated freezing and thawing.

Background Information

Growth factor active in angiogenesis, vasculogenesis and endothelial cell growth. Induces endothelial cell proliferation, promotes cell migration, inhibits apoptosis and induces permeabilization of blood vessels. Binds to the FLT1/VEGFR1 and KDR/VEGFR2 receptors, heparan sulfate and heparin.

Reference

Anti-VEGF/VEGFA Antibody (Clone#ADB-22)被引用在15文献中。

Product datasheet
Anti-VEGF/VEGFA Antibody
(Clone#ADB-22)
Catalog Number: BM3995

BOSTER

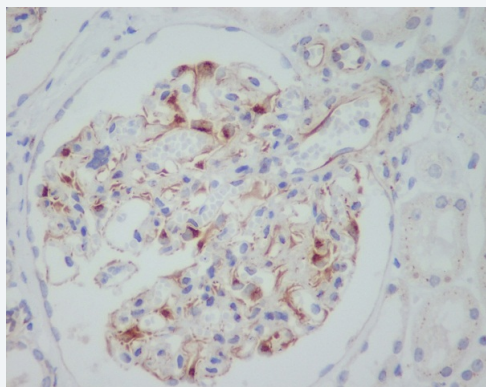
antibody and ELISA experts

BOSTER BIOLOGICAL TECHNOLOGY

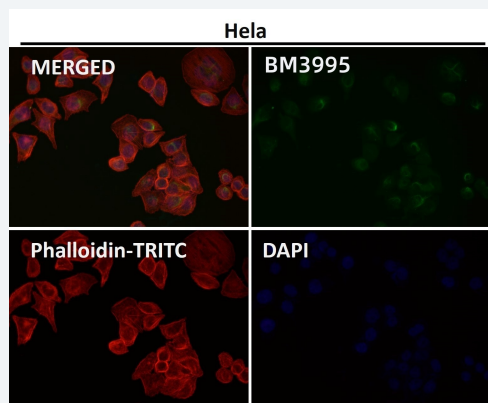
Building C21, 3rd and 4th floors, Optics Valley Biomedical Accelerator,
Wuhan East Lake High-tech Development Zone

Web: www.boster.com **Phone:** 027-67845390 **Email:** boster@boster.com

Selected Validation Data



Immunohistochemical analysis of paraffin-embedded human kidney, using VEGF Antibody.



Immunofluorescent analysis using the Antibody.