

## Basic Information

<b>Product Name</b>	Anti-P53/TP53 Antibody (Clone#AGC-20)	
<b>Gene Name</b>	TP53	
<b>Source</b>	Rabbit	
<b>Clonality</b>	Monoclonal	
<b>Isotype</b>	IgG	
<b>Species Reactivity</b>	human	
<b>Tested Application</b>	WB, IHC, ICC/IF, IP	
<b>Contents</b>	500 ug/ml; Rabbit IgG in phosphate buffered saline, pH 7.4, 150mM NaCl, 0.02% sodium azide, 0.4-0.5 mg/ml BSA and 50% glycerol.	
<b>Immunogen</b>	A synthesized peptide derived from human p53	
<b>Concentration</b>	500 ug/ml	
<b>Purification</b>	Affinity-chromatography	
<b>Observed MW</b>	53 kDa	
<b>Dilution Ratios</b>	Western blot (WB):	1:500-2000
	Immunohistochemistry (IHC):	1:50-200
	Immunocytochemistry/Immunofluorescence (ICC/IF):	1:50-200
	ImmunoPrecipitation (IP):	1:20

## Storage

12 months from date of receipt, -20°C as supplied. 6 months 2 to 8°C after reconstitution. Avoid repeated freezing and thawing.

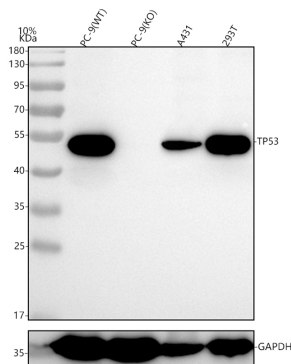
## Background Information

The p53 tumor antigen is found in increased amounts in a wide variety of transformed cells. The protein is also detectable in many actively proliferating, nontransformed cells, but it is undetectable or present at low levels in resting cells. This protein induces cell cycle arrest or apoptosis in response to sublethal or severe DNA damage, respectively, by differential transcription of target genes and through transcription-independent apoptotic functions. The p53 protein contains 393 amino acids. Human p53 tumour antigen is Located to band 17p13. p53 mutations are common in pancreatic cancer and are absent in chronic pancreatitis.

## Reference

Anti-P53/TP53 Antibody (Clone#AGC-20)被引用在1文献中。

## Selected Validation Data



Western blot analysis of P53/TP53 using anti-P53/TP53 antibody (BM4026). The sample well of each lane was loaded with 30 ug of sample under reducing conditions.

Lane 1: human PC-9(WT) whole cell lysates,

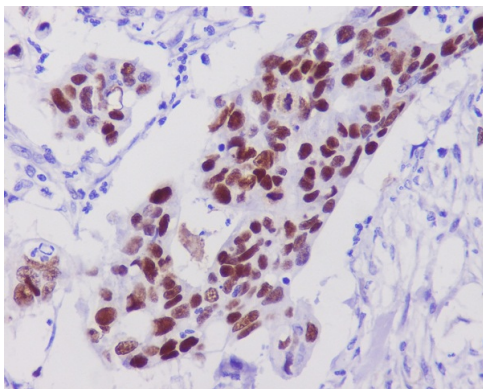
Lane 2: human PC-9(KO) whole cell lysates,

Lane 3: human A431 whole cell lysates,

Lane 4: human 293T whole cell lysates.

After electrophoresis, proteins were transferred to a membrane.

Then the membrane was incubated with rabbit anti-P53/TP53 antigen affinity purified monoclonal antibody (BM4026) at a dilution of 1:1000 and probed with a goat anti-rabbit IgG-HRP secondary antibody (Catalog # BA1054). The signal is developed using ECL Plus Western Blotting Substrate (Catalog # AR1197). A specific band was detected for P53/TP53 at approximately 53 kDa. The expected band size for P53/TP53 is at 44 kDa.



Immunohistochemical analysis of paraffin-embedded human colon cancer, using p53 Antibody.

Product datasheet

**Anti-P53/TP53 Antibody  
(Clone#AGC-20)**

**Catalog Number: BM4026**

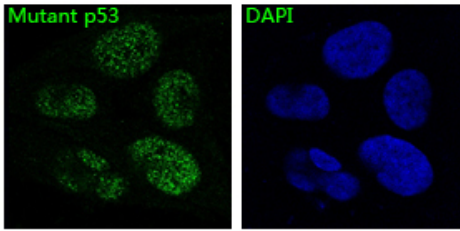
**BOSTER**<sup>®</sup>

antibody and ELISA experts

**BOSTER BIOLOGICAL TECHNOLOGY**

Building C21, 3rd to 5th Floors, Optics Valley Biopharmaceutical Accelerator,  
East Lake High-Tech Development Zone, Wuhan.

**Web:** [www.boster.com](http://www.boster.com) **Phone:** 027-67845390/1/2 **Email:** [boster@boster.com](mailto:boster@boster.com)



Immunofluorescent analysis of HeLa cells, using p53 Antibody .