

Basic Information

Product Name	Anti-NGF beta/NGF Antibody (Clone#BDE-14)		
Gene Name	NGF		
Source	Rabbit		
Clonality	Monoclonal		
Isotype	IgG		
Species Reactivity	human, mouse, rat		
Tested Application	WB, IHC, ICC/IF		
Contents	500 ug/ml; Rabbit IgG in phosphate buffered saline, pH 7.4, 150mM NaCl, 0.02% sodium azide, 0.4-0.5 mg/ml BSA and 50% glycerol.		
Immunogen	A synthesized peptide derived from human NGF		
Concentration	500 ug/ml		
Purification	Affinity-chromatography		
Observed MW	14,27-35 kDa		
Dilution Ratios	Western blot (WB):		1:500-2000
	Immunohistochemistry (IHC):		1:50-200
	Immunocytochemistry/Immunofluorescence (ICC/IF):		1:50-200

Storage

12 months from date of receipt, -20°C as supplied.

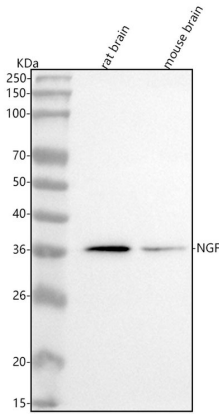
Background Information

Nerve growth factor (NGF) is a neurotrophic factor and neuropeptide primarily involved in the regulation of growth, maintenance, proliferation, and survival of certain target neurons. It is mapped to 1p13.2. This gene is a member of the NGF-beta family and encodes a secreted protein which homodimerizes and is incorporated into a larger complex. This protein has nerve growth stimulating activity and the complex is involved in the regulation of growth and the differentiation of sympathetic and certain sensory neurons. Mutations in this gene have been associated with hereditary sensory and autonomic neuropathy, type 5 (HSAN5), and dysregulation of this gene's expression is associated with allergic rhinitis.

Reference

Anti-NGF beta/NGF Antibody (Clone#BDE-14)被引用在24文献中。

Selected Validation Data

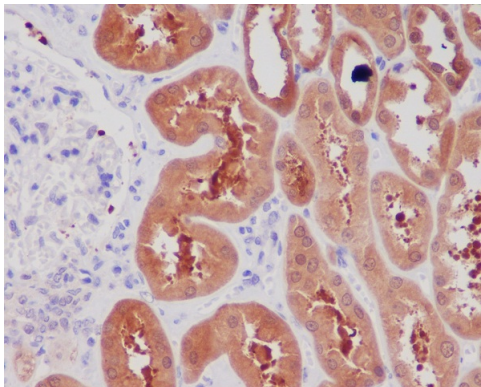


Western blot analysis of anti-NGF beta/NGF antibody (BM4100). The sample well of each lane was loaded with 30 ug of sample under reducing conditions.

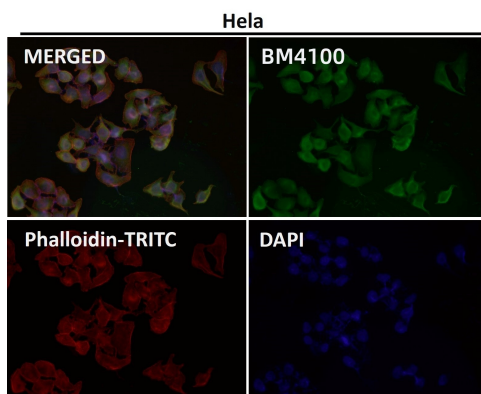
Lane 1: rat brain tissue lysates,

Lane 2: mouse brain tissue lysates.

After electrophoresis, proteins were transferred to a membrane. Then the membrane was incubated with rabbit anti-NGF beta/NGF antigen affinity purified monoclonal antibody (BM4100) at a dilution of 1:1000 and probed with a goat anti-rabbit IgG-HRP secondary antibody (Catalog # BA1054). The signal is developed using ECL Plus Western Blotting Substrate (Catalog # AR1197). A specific band was detected for NGF beta/NGF at approximately 35 kDa. The expected band size for NGF beta/NGF is at 27 kDa.



Immunohistochemical analysis of paraffin-embedded human kidney, using NGF Antibody.



Immunofluorescent analysis using the Antibody.