

Basic Information

Product Name	Anti-Desmin/DES Antibody (Clone#BDF-4)	
Gene Name	DES	
Source	Rabbit	
Clonality	Monoclonal	
Isotype	IgG	
Species Reactivity	human, mouse, rat	
Tested Application	WB, IHC, ICC/IF	
Contents	500 ug/ml; Rabbit IgG in phosphate buffered saline, pH 7.4, 150mM NaCl, 0.02% sodium azide, 0.4-0.5 mg/ml BSA and 50% glycerol.	
Immunogen	A synthesized peptide derived from human Desmin	
Concentration	500 ug/ml	
Purification	Affinity-chromatography	
Observed MW	54 kDa	
Dilution Ratios	Western blot (WB): 1:1000-5000 Immunohistochemistry (IHC): 1:50-200 Immunocytochemistry/Immunofluorescence (ICC/IF): 1:50-200	

Storage

12 months from date of receipt, -20°C as supplied.

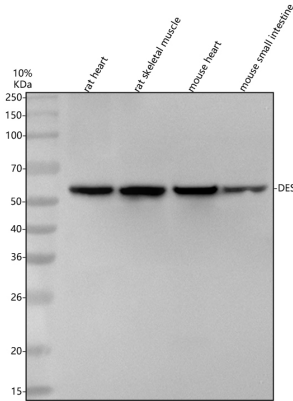
Background Information

DES, also called desmin, is a protein that in humans is encoded by the DES gene, and this gene is mapped to 2q35. DES is the muscle-specific member of the intermediate filament (IF) protein family. It is one of the earliest myogenic markers, both in heart and somites, and is expressed in satellite stem cells and replicating myoblasts. DES is very important in muscle cell architecture and structure since it connects many components of the cytoplasm. It may be also play an important role in mitochondria function. What's more, DES provides attachments between the terminal Z disc and membrane-associated proteins to form a force-transmitting system that parallels the thin filaments at myotendinous junctions.

Reference

Anti-Desmin/DES Antibody (Clone#BDF-4)被引用在12文献中。

Selected Validation Data



Western blot analysis of anti-Desmin/DES antibody (BM4101). The sample well of each lane was loaded with 30 ug of sample under reducing conditions.

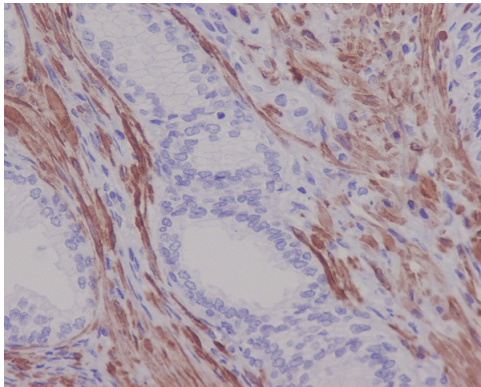
Lane 1: rat heart tissue lysates,

Lane 2: rat skeletal muscle tissue lysates,

Lane 3: mouse heart tissue lysates,

Lane 4: mouse skeletal muscle tissue lysates.

After electrophoresis, proteins were transferred to a membrane. Then the membrane was incubated with rabbit anti-Desmin/DES antigen affinity purified monoclonal antibody (BM4101) at a dilution of 1:1000 and probed with a goat anti-rabbit IgG-HRP secondary antibody (Catalog # BA1054). The signal is developed using ECL Plus Western Blotting Substrate (Catalog # AR1197). A specific band was detected for Desmin/DES at approximately 54 kDa. The expected band size for Desmin/DES is at 54 kDa.



Immunohistochemical analysis of paraffin-embedded human prostate, using Desmin Antibody.