

Basic Information

Product Name	Anti-PTEN Antibody (Clone#BEI-16)	
Gene Name	PTEN	
Source	Rabbit	
Clonality	Monoclonal	
Isotype	IgG	
Species Reactivity	human, mouse, rat	
Tested Application	WB, IHC, ICC/IF, FCM	
Contents	500 ug/ml; Rabbit IgG in phosphate buffered saline, pH 7.4, 150mM NaCl, 0.02% sodium azide, 0.4-0.5 mg/ml BSA and 50% glycerol.	
Immunogen	A synthesized peptide derived from human PTEN	
Concentration	500 ug/ml	
Purification	Affinity-chromatography	
Observed MW	47-55 kDa	
Dilution Ratios	Western blot (WB):	1:500-2000
	Immunohistochemistry (IHC):	1:50-200
	Immunocytochemistry/Immunofluorescence (ICC/IF):	1:50-200
	Flow Cytometry (FCM):	1:20

Storage

12 months from date of receipt, -20°C as supplied.

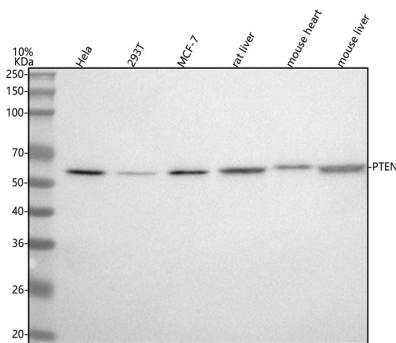
Background Information

PTEN is also known as BZS, DEC, CWS1, GLM2, MHAM, TEP1, PTEN1. It is mapped to 10q23.3. This gene was identified as a tumor suppressor that is mutated in a large number of cancers at high frequency. The protein encoded by this gene is a phosphatidylinositol-3,4,5-trisphosphate 3-phosphatase. It contains a tensin like domain as well as a catalytic domain similar to that of the dual specificity protein tyrosine phosphatases. Unlike most of the protein tyrosine phosphatases, this protein preferentially dephosphorylates phosphoinositide substrates. The PTEN structure reveals a phosphatase domain that is similar to protein phosphatases but also has an enlarged active site important for the accommodation of the phosphoinositide substrate.

Reference

Anti-PTEN Antibody (Clone#BEI-16)被引用在18文献中。

Selected Validation Data



Western blot analysis of anti-PTEN antibody (BM4114). The sample well of each lane was loaded with 30 ug of sample under reducing conditions.

Lane 1: human Hela whole cell lysates,

Lane 2: human 293T whole cell lysates,

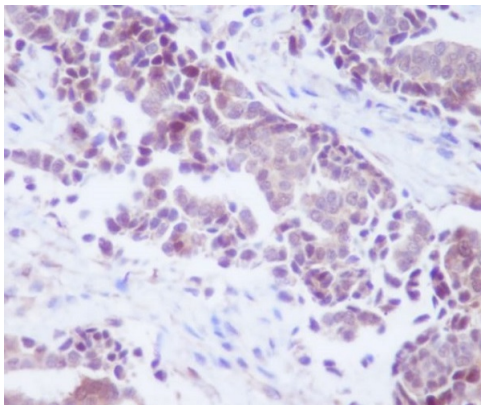
Lane 3: human MCF-7 whole cell lysates,

Lane 4: rat liver tissue lysates,

Lane 5: mouse heart tissue lysates,

Lane 6: mouse liver tissue lysates.

After electrophoresis, proteins were transferred to a membrane. Then the membrane was incubated with rabbit anti-PTEN antigen affinity purified monoclonal antibody (BM4114) at a dilution of 1:1000 and probed with a goat anti-rabbit IgG-HRP secondary antibody (Catalog # BA1054). The signal is developed using ECL Plus Western Blotting Substrate (Catalog # AR1197). A specific band was detected for PTEN at approximately 47-55 kDa. The expected band size for PTEN is at 47 kDa.



Immunohistochemical analysis of paraffin-embedded human kidney, using PTEN Antibody .

Product datasheet

Anti-PTEN Antibody (Clone#BEI-16)

Catalog Number: BM4114



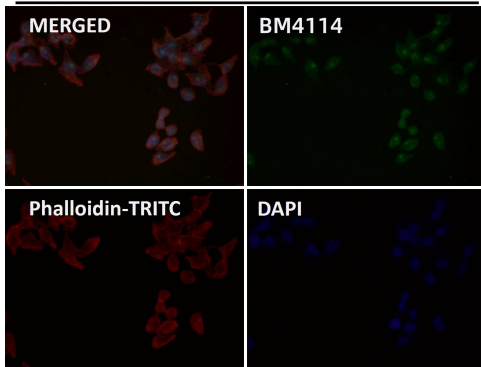
antibody and ELISA experts

BOSTER BIOLOGICAL TECHNOLOGY

Building C21, 3rd to 5th Floors, Optics Valley Biopharmaceutical Accelerator,
East Lake High-Tech Development Zone, Wuhan.

Web: www.boster.com **Phone:** 027-67845390/1/2 **Email:** boster@boster.com

Hela



Immunofluorescent analysis using the Antibody.