

## Basic Information

|                           |  |  |
|---------------------------|--|--|
| <b>Product Name</b>       | Anti-Integrin Beta 3/ITGB3 Antibody (Clone#BFE-9)  |  |
| <b>Gene Name</b>          | ITGB3  |  |
| <b>Source</b>             | Rabbit   |  |
| <b>Clonality</b>          | Monoclonal   |  |
| <b>Isotype</b>            | IgG  |  |
| <b>Species Reactivity</b> | human, mouse, rat  |  |
| <b>Tested Application</b> | WB, IHC, ICC/IF  |  |
| <b>Contents</b>           | 500 ug/ml; Rabbit IgG in phosphate buffered saline, pH 7.4, 150mM NaCl, 0.02% sodium azide, 0.4-0.5 mg/ml BSA and 50% glycerol.    |  |
| <b>Immunogen</b>          | A synthesized peptide derived from human Integrin beta 3   |  |
| <b>Concentration</b>      | 500 ug/ml  |  |
| <b>Purification</b>       | Affinity-chromatography  |  |
| <b>Observed MW</b>        | 100 kDa  |  |
| <b>Dilution Ratios</b>    | Western blot (WB): 1:500-2000<br>Immunohistochemistry (IHC): 1:50-200<br>Immunocytochemistry/Immunofluorescence (ICC/IF): 1:50-200 |  |

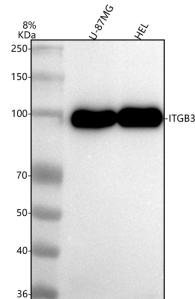
## Storage

12 months from date of receipt, -20°C as supplied.

## Background Information

ITGB3(INTEGRIN, BETA-3), also called GP3A, GPIIb, CD61, is a protein that in humans is encoded by the ITGB3 gene. GP3A is a cluster of differentiation found on thrombocytes. The ITGB3 complex belongs to the integrin class of cell adhesion molecule receptors that share a common heterodimeric structure with alpha and beta subunits. The GP3A gene is mapped to 17q21.32. And the GP3A gene has 14 exons. The 3-prime exon is larger than 1,700 nucleotides and contains the 3-prime untranslated region. The ITGB3 complex mediates platelet aggregation by acting as a receptor for fibrinogen. Although the ITGB3 is expressed on the cell surface at normal levels and is capable of function following extracellular stimulation, it could not be activated via the "inside-out" signaling pathways.

## Selected Validation Data



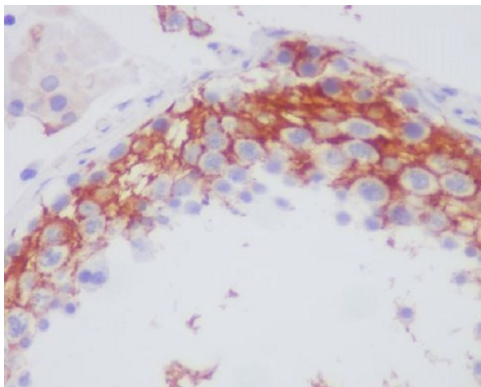
Western blot analysis of anti-Integrin Beta 3/ITGB3 antibody (BM4120).

The sample well of each lane was loaded with 30 ug of sample under reducing conditions.

Lane 1: human U-87MG whole cell lysates,

Lane 2: human HEL whole cell lysates.

After electrophoresis, proteins were transferred to a membrane. Then the membrane was incubated with rabbit anti-Integrin Beta 3/ITGB3 antigen affinity purified monoclonal antibody (BM4120) at a dilution of 1:1000 and probed with a goat anti-rabbit IgG-HRP secondary antibody (Catalog # BA1054). The signal is developed using ECL Plus Western Blotting Substrate (Catalog # AR1197). A specific band was detected for Integrin Beta 3/ITGB3 at approximately 100 kDa. The expected band size for Integrin Beta 3/ITGB3 is at 87 kDa.



Immunohistochemical analysis of paraffin-embedded human testis, using Integrin beta 3 Antibody .