

Basic Information

Product Name	Anti-MMP1 Antibody (Clone#CDG-13)	
Gene Name	MMP1	
Source	Rabbit	
Clonality	Monoclonal	
Isotype	IgG	
Species Reactivity	human	
Tested Application	WB, IHC, ICC/IF, FCM	
Contents	500 ug/ml; Rabbit IgG in phosphate buffered saline, pH 7.4, 150mM NaCl, 0.02% sodium azide, 0.4-0.5 mg/ml BSA and 50% glycerol.	
Immunogen	A synthesized peptide derived from human MMP1	
Concentration	500 ug/ml	
Purification	Affinity-chromatography	
Observed MW	54 kDa	
Dilution Ratios	Western blot (WB):	1:500-2000
	Immunohistochemistry (IHC):	1:50-200
	Immunocytochemistry/Immunofluorescence (ICC/IF):	1:50-200
	Flow Cytometry (FCM):	1:50

Storage

12 months from date of receipt, -20°C as supplied.

Background Information

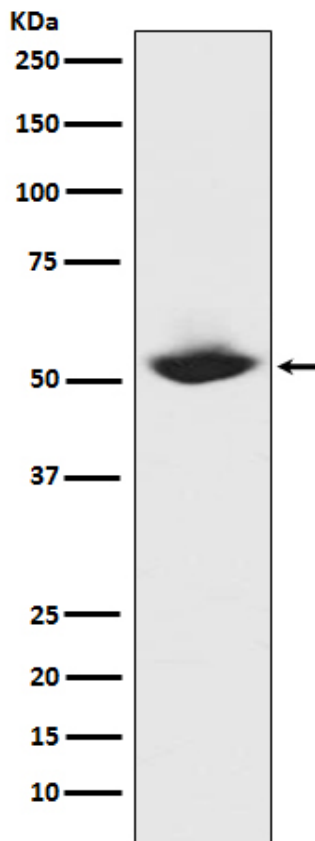
Matrix metalloproteinase-1 (MMP-1), also known as interstitial collagenase and fibroblast collagenase, is an enzyme that in humans is encoded by the MMP1 gene. MMP-1 was the first vertebrate collagenase both purified to homogeneity as a protein, and cloned as a cDNA. Proteins of the matrix metalloproteinase (MMP) family are involved in the breakdown of extracellular matrix in normal physiological processes, such as embryonic development, reproduction, and tissue remodeling, as well as in disease processes, such as arthritis and metastasis. Most MMP's are secreted as inactive proproteins which are activated when cleaved by extracellular proteinases. This gene encodes a secreted enzyme which breaks down the interstitial collagens, types I, II, and III. It is part of a cluster of MMP genes which localize to chromosome 11q22.3. Alternative splicing results in multiple transcript variants.

Reference

Anti-MMP1 Antibody (Clone#CDG-13)被引用在2文献中。

Selected Validation Data

Western blot analysis of MMP1 expression in MMP1 recombinant protein.



Product datasheet

Anti-MMP1 Antibody (Clone#CDG-13)

Catalog Number: BM4205

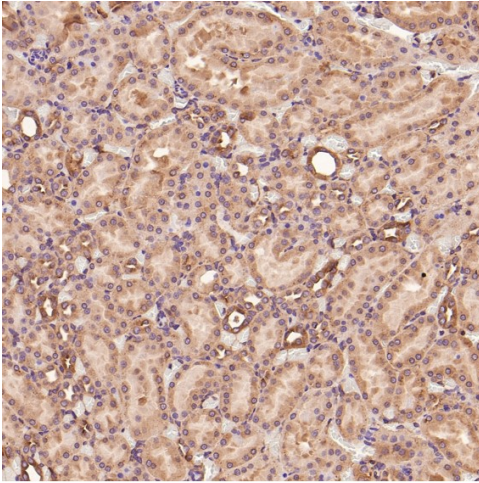


antibody and ELISA experts

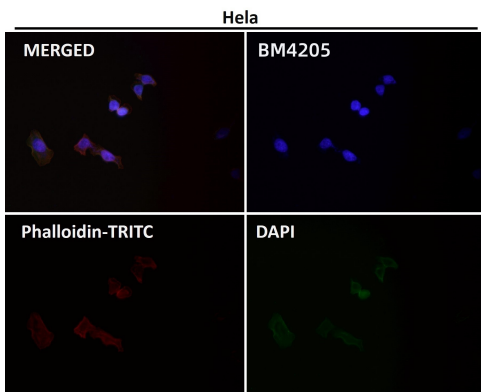
BOSTER BIOLOGICAL TECHNOLOGY

Building C21, 3rd to 5th Floors, Optics Valley Biopharmaceutical Accelerator,
East Lake High-Tech Development Zone, Wuhan.

Web: www.boster.com **Phone:** 027-67845390/1/2 **Email:** boster@boster.com



Immunohistochemical analysis of paraffin-embedded Rat kidney, using the Antibody.



Immunofluorescent analysis using the Antibody.