

Basic Information

Product Name	Anti-WT1 Antibody (Clone#CEH-23)	
Gene Name	WT1	
Source	Rabbit	
Clonality	Monoclonal	
Isotype	IgG	
Species Reactivity	human, mouse	
Tested Application	WB, IHC, ICC/IF, FCM	
Contents	500 ug/ml; Rabbit IgG in phosphate buffered saline, pH 7.4, 150mM NaCl, 0.02% sodium azide, 0.4-0.5 mg/ml BSA and 50% glycerol.	
Immunogen	A synthesized peptide derived from human Wilms Tumor Protein	
Concentration	500 ug/ml	
Purification	Affinity-chromatography	
Observed MW	55 kDa	
Dilution Ratios	Western blot (WB):	1:500-2000
	Immunohistochemistry (IHC):	1:50-200
	Immunocytochemistry/Immunofluorescence (ICC/IF):	1:50-200
	Flow Cytometry (FCM):	1:20

Storage

12 months from date of receipt, -20°C as supplied. 6 months 2 to 8°C after reconstitution. Avoid repeated freezing and thawing.

Reference

Anti-WT1 Antibody (Clone#CEH-23)被引用在2文献中。

Selected Validation Data

Product datasheet

Anti-WT1 Antibody (Clone#CEH-23)

Catalog Number: **BM4216**

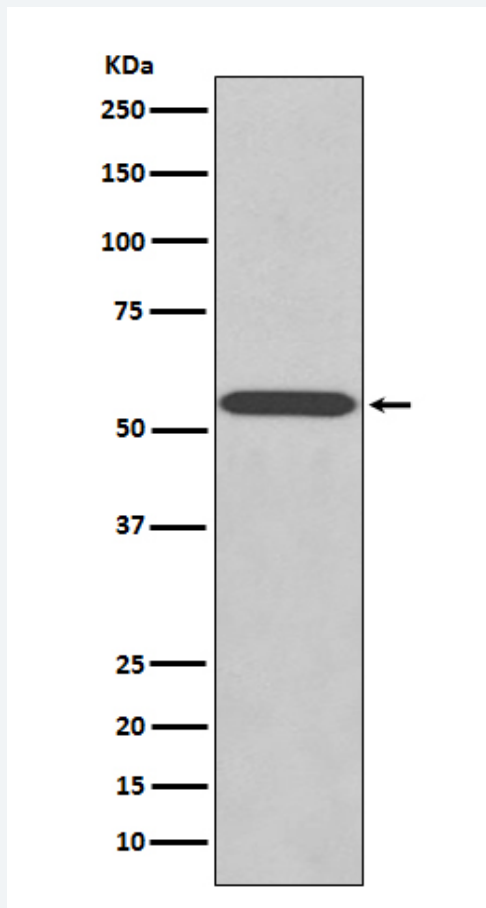
BOSTER

antibody and ELISA experts

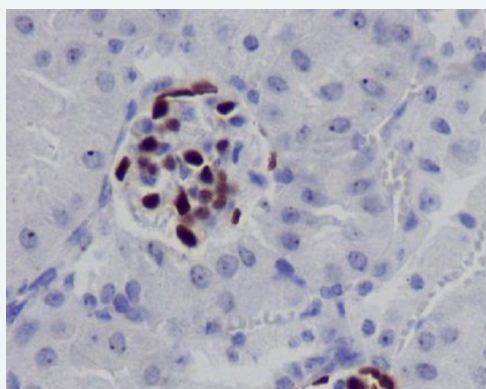
BOSTER BIOLOGICAL TECHNOLOGY

Building C21, 3rd and 4th floors, Optics Valley Biomedical Accelerator,
Wuhan East Lake High-tech Development Zone

Web: www.boster.com Phone: 027-67845390 Email: boster@boster.com



Western blot analysis of WT1 expression in K562 cell lysate.



Immunohistochemical analysis of paraffin-embedded mouse kidney, using Wilms Tumor Protein Antibody.