

## Basic Information

<b>Product Name</b>	Anti-GLUT1/SLC2A1 Antibody (Clone#CGG-19)	
<b>Gene Name</b>	SLC2A1	
<b>Source</b>	Rabbit	
<b>Clonality</b>	Monoclonal	
<b>Isotype</b>	IgG	
<b>Species Reactivity</b>	human, mouse, rat	
<b>Tested Application</b>	WB, IHC, ICC/IF, FCM	
<b>Contents</b>	500 ug/ml; Rabbit IgG in phosphate buffered saline, pH 7.4, 150mM NaCl, 0.02% sodium azide, 0.4-0.5 mg/ml BSA and 50% glycerol.	
<b>Immunogen</b>	A synthesized peptide derived from human Glucose Transporter GLUT1	
<b>Concentration</b>	500 ug/ml	
<b>Purification</b>	Affinity-chromatography	
<b>Observed MW</b>	55 kDa	
<b>Dilution Ratios</b>	Western blot (WB):	1:500-2000
	Immunohistochemistry (IHC):	1:50-200
	Immunocytochemistry/Immunofluorescence (ICC/IF):	1:50-200
	Flow Cytometry (FCM):	1:50

## Storage

12 months from date of receipt, -20°C as supplied. 6 months 2 to 8°C after reconstitution. Avoid repeated freezing and thawing.

## Background Information

GLUT1, also known as SLC2A1, is a major glucose transporter in the mammalian blood-brain barrier whose gene is mapped to 1p35-p31.3 and contains 10 exons. It is present at high levels in primate erythrocytes and brain endothelial cells. Not only can transport dehydroascorbic acid (the oxidized form of vitamin C) into the brain, GLUT1 is also likely to contribute to HTLV-associated disorders through interacting with HTLV envelope glycoproteins. Functionally, GLUT1 deficiency causes a decrease in embryonic glucose uptake and apoptosis, which may be involved in diabetic embryopathy, by contrast, an increased expression of GLUT1 in some malignant tumors may suggest a role for glucose-derivative tracers to detect in vivo thyroid cancer metastases by positron-emission tomography scanning.

Product datasheet

## Anti-GLUT1/SLC2A1 Antibody (Clone#CGG-19)

Catalog Number: **BM4235**

**BOSTER**<sup>®</sup>

antibody and ELISA experts

**BOSTER BIOLOGICAL TECHNOLOGY**

Building C21, 3rd to 5th Floors, Optics Valley Biopharmaceutical Accelerator,  
East Lake High-Tech Development Zone, Wuhan.

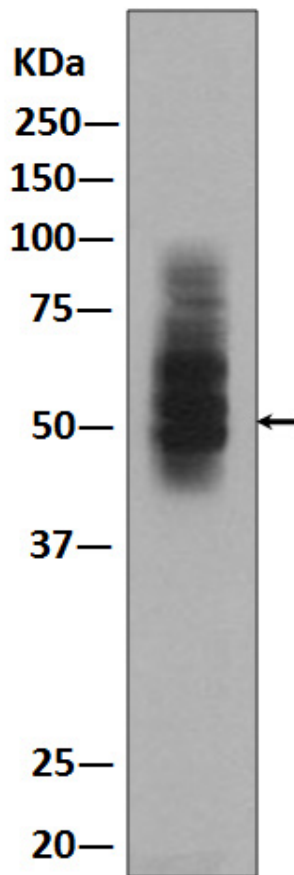
Web: [www.boster.com](http://www.boster.com) Phone: 027-67845390/1/2 Email: [boster@boster.com](mailto:boster@boster.com)

## Reference

Anti-GLUT1/SLC2A1 Antibody (Clone#CGG-19)被引用在6文献中。

## Selected Validation Data

Western blot analysis of GLUT1 expression in HepG2 lysate.



Product datasheet

**Anti-GLUT1/SLC2A1 Antibody  
(Clone#CGG-19)**

**Catalog Number: BM4235**

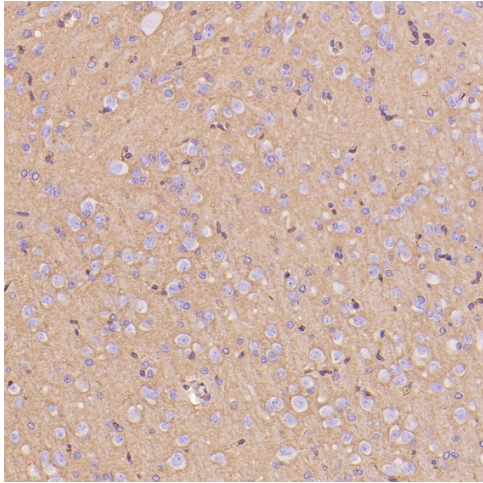
**BOSTER**<sup>®</sup>

antibody and ELISA experts

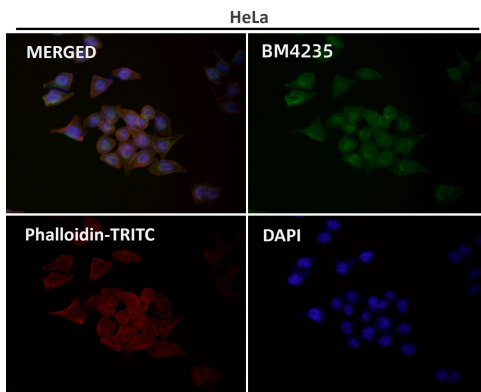
**BOSTER BIOLOGICAL TECHNOLOGY**

Building C21, 3rd to 5th Floors, Optics Valley Biopharmaceutical Accelerator,  
East Lake High-Tech Development Zone, Wuhan.

**Web:** www.boster.com **Phone:** 027-67845390/1/2 **Email:** boster@boster.com



Immunohistochemical analysis of paraffin-embedded Rat hippocampus , using the Antibody.



Immunofluorescent analysis using the Antibody.