

Basic Information

Product Name	Anti-PKC Alpha/PRKCA Antibody (Clone#CHO-16)	
Gene Name	PRKCA	
Source	Rabbit	
Clonality	Monoclonal	
Isotype	IgG	
Species Reactivity	human, mouse, rat	
Tested Application	WB, IHC, ICC/IF, IP, FCM	
Contents	500 ug/ml; Rabbit IgG in phosphate buffered saline, pH 7.4, 150mM NaCl, 0.02% sodium azide, 0.4-0.5 mg/ml BSA and 50% glycerol.	
Immunogen	A synthesized peptide derived from human PKC alpha	
Concentration	500 ug/ml	
Purification	Affinity-chromatography	
Observed MW	77 kDa	
Dilution Ratios	Western blot (WB):	1:500-2000
	Immunohistochemistry (IHC):	1:50-200
	Immunocytochemistry/Immunofluorescence (ICC/IF):	1:50-200
	ImmunoPrecipitation (IP):	1:20
	Flow Cytometry (FCM):	1:20

Storage

12 months from date of receipt, -20°C as supplied.

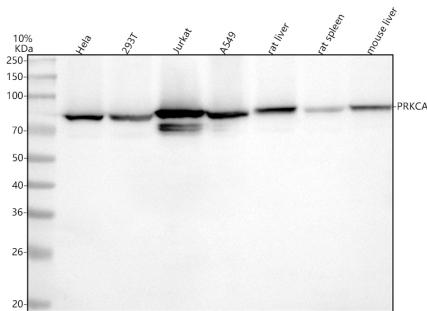
Background Information

Protein kinase C (PKC) is the major phorbol ester receptor. Activation of PKC by calcium ions and the second messenger diacylglycerol is thought to play a central role in the induction of cellular responses to a variety of ligand-receptor systems and in the regulation of cellular responsiveness to external stimuli. Three of these, termed alpha, beta and gamma, are highly homologous. PRKCA1 is mapped to 17q22-q23.2. PRKCA1 regulates cardiac contractility and propensity toward heart failure.

Reference

Anti-PKC Alpha/PRKCA Antibody (Clone#CHO-16)被引用在4文献中。

Selected Validation Data



Western blot analysis of anti-PKC Alpha/PRKCA antibody (BM4238). The sample well of each lane was loaded with 30 ug of sample under reducing conditions.

Lane 1: human Hela whole cell lysates,

Lane 2: human 293T whole cell lysates,

Lane 3: human Jurkat whole cell lysates,

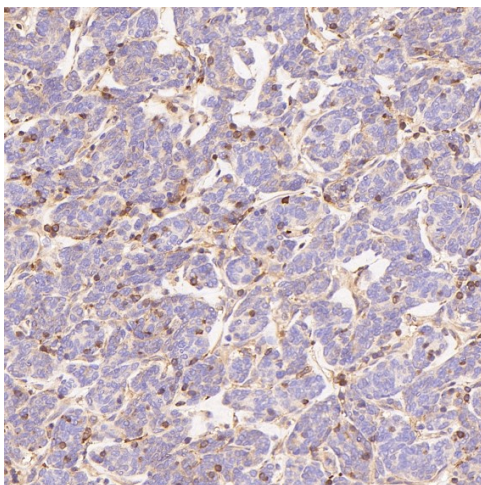
Lane 4: human A549 whole cell lysates,

Lane 5: rat liver tissue lysates,

Lane 6: rat spleen tissue lysates,

Lane 7: mouse liver tissue lysates.

After electrophoresis, proteins were transferred to a membrane. Then the membrane was incubated with rabbit anti-PKC Alpha/PRKCA antigen affinity purified monoclonal antibody (BM4238) at a dilution of 1:1000 and probed with a goat anti-rabbit IgG-HRP secondary antibody (Catalog # BA1054). The signal is developed using ECL Plus Western Blotting Substrate (Catalog # AR1197). A specific band was detected for PKC Alpha/PRKCA at approximately 77 kDa. The expected band size for PKC Alpha/PRKCA is at 77 kDa.



Immunohistochemical analysis of paraffin-embedded Human thymoma, using the Antibody.

Product datasheet

**Anti-PKC Alpha/PRKCA Antibody
(Clone#CHO-16)**

Catalog Number: BM4238



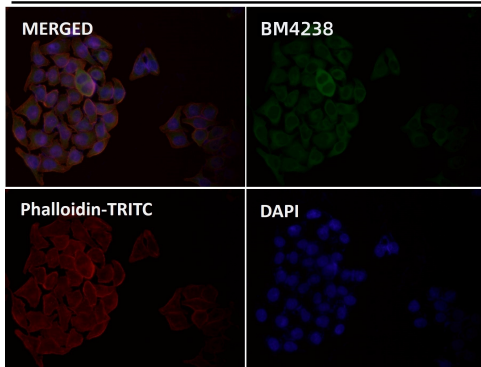
antibody and ELISA experts

BOSTER BIOLOGICAL TECHNOLOGY

Building C21, 3rd to 5th Floors, Optics Valley Biopharmaceutical Accelerator,
East Lake High-Tech Development Zone, Wuhan.

Web: www.boster.com **Phone:** 027-67845390/1/2 **Email:** boster@boster.com

HeLa



Immunofluorescent analysis using the Antibody.