

Basic Information

Product Name	Anti-Integrin Beta 1/ITGB1 Antibody (Clone#DDI-9)		
Gene Name	ITGB1		
Source	Rabbit		
Clonality	Monoclonal		
Isotype	IgG		
Species Reactivity	human, mouse, rat		
Tested Application	WB, IHC		
Contents	500 ug/ml; Rabbit IgG in phosphate buffered saline, pH 7.4, 150mM NaCl, 0.02% sodium azide, 0.4-0.5 mg/ml BSA and 50% glycerol.		
Immunogen	A synthesized peptide derived from human Integrin beta 1		
Concentration	500 ug/ml		
Purification	Affinity-chromatography		
Observed MW	120-130 kDa		
Dilution Ratios	Western blot (WB): 1:500-2000 Immunohistochemistry (IHC):1:50-200		

Storage

12 months from date of receipt, -20°C as supplied.

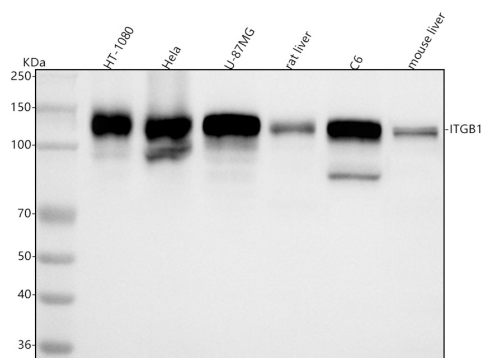
Background Information

Integrin beta-1, also known as CD29, is a protein that in humans is encoded by the ITGB1 gene. CD29 is an integrin unit associated with very late antigen receptors. It is known to conjoin with alpha-3 subunit to create alpha3beta1 complex that reacts to such molecules as netrin-1 and reelin. This gene contains a beta subunit that appears to be analogous to band-3 of integrin. It is mapped to 10p11.22. It is found that FER mediates crosstalk between CDH2 and CD29. Integrin family members are membrane receptors involved in cell adhesion and recognition in a variety of processes including embryogenesis, hemostasis, tissue repair, immune response and metastatic diffusion of tumor cells. The protein encoded by this gene is a beta subunit.

Reference

Anti-Integrin Beta 1/ITGB1 Antibody (Clone#DDI-9)被引用在19文献中。

Selected Validation Data



Western blot analysis of anti-Integrin Beta 1/ITGB1 antibody (BM4308). The sample well of each lane was loaded with 30 ug of sample under reducing conditions.

Lane 1: human HT-1080 whole cell lysates,

Lane 2: human Hela whole cell lysates,

Lane 3: human U-87 MG whole cell lysates,

Lane 4: rat liver tissue lysates,

Lane 5: rat C6 whole cell lysates,

Lane 6: mouse liver tissue lysates.

After electrophoresis, proteins were transferred to a membrane.

Then the membrane was incubated with rabbit anti-Integrin Beta 1/ITGB1 antigen affinity purified monoclonal antibody (BM4308) at a dilution of 1:1000 and probed with a goat anti-rabbit IgG-HRP secondary antibody (Catalog # BA1054). The signal is developed using ECL Plus Western Blotting Substrate (Catalog # AR1197). A specific band was detected for Integrin Beta 1/ITGB1 at approximately 140 kDa. The expected band size for Integrin Beta 1/ITGB1 is at 88 kDa.